



Mobile Spray Rigs



Self-Contained System for Foam and Coating Applications

Designed for Performance. Built to Last.



CJ Spray Mobile Spray Rigs are built tough for foam and coating applications.

CJ Spray offers a full line of custom turn-key mobile spray rigs designed for the task at hand. From residential insulation to pipe coating CJ Spray has you covered.

Built Solid to Support Equipment and Materials

CJ Mobile Rigs are designed specifically for the urethane foam market. We understand what it takes for a contractor to be successful, and to stay up and running — attention to detail is critical when dealing with moisture sensitive isocyanate and resin with blowing agent that can easily froth.

Coating Applications

Our rigs can handle the most difficult to spray coatings — with combinations specifically designed for Polyurea, Urethane, and Epoxy. We can customize our rigs with off-ratio pumps, agitators, heated hoppers and many other accessories to handle the most demanding products.

Backed by Warranty

There are several components that make up a CJ Spray Mobile Spray Rig — and we use only the best. You can trust that CJ Spray only selects premium grade equipment manufacturers with national service networks to keep you going.

About CJ Spray, Inc.

CJ Spray was formerly a spray equipment manufacturer which was purchased by Graco in 1993. In 1995, CJ Spray was started as a distributor/wholesaler of equipment to spray, meter, mix and dispense liquids servicing consumer, contractor and industrial markets. By teaming with material manufacturers CJ Spray has developed turn-key spray packages for some of the most difficult to handle coatings in the world. For more information please visit www.cjspray.com.

Standard Features

Premium Mobile Spray Rigs have Premium Standard Features

CJ Spray Mobile Spray Rigs come complete with everything you need to get started AND keep going. Everything is included up front... no nickel and dime later.



Heated Hose Wrap

Holds up to 410 ft. of hose. Designed with no sharp edges to tear or fray protective scuff jacket. Includes mounting bracket for heated hose circulation manifold.



Fit and Finish

Interior of trailer is lined with a white laminated plywood (not just painted). White aluminum trim in corners keeps the fluid and air hoses concealed for a clean and professional look.



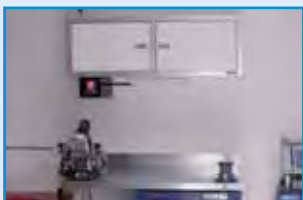
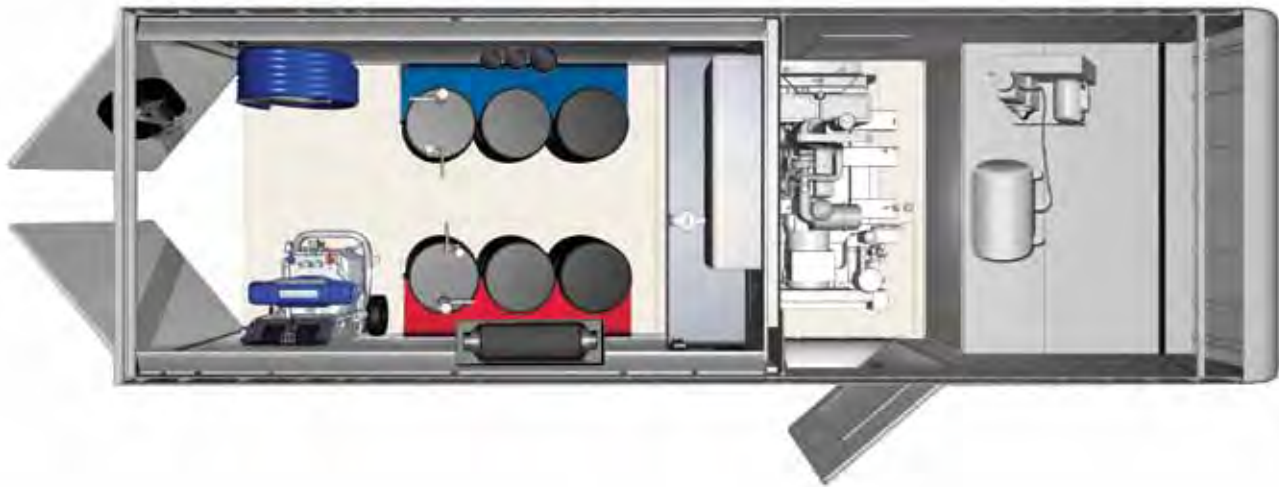
Fully Insulated

CJ Spray Mobile Rigs are fully insulated with sprayed polyurethane foam for the best insulation while adding structural strength to the trailer.



Trailer Specs

Trailer manufactured by United with 7.5 ft. tall interior height, double I-beam construction with support studs on 16 inch centers. Includes rear bogey wheels, and is backed with a 5 year warranty.



Work Bench and Cabinet

Galvanized steel work bench with vise, grinder and overhead white aluminum locking cabinets.



Barrel Braces

Engineered to hold two or three sets of material barrels securely for a mobile application.



Generator/Air Compressor

All rigs come with generators and air compressors from leading manufacturers and are approved installations backed by warranty.



Separated Utility Room

Generator is installed in separate utility compartment, sealed from the spray/work space — reducing noise and exposure to emissions per OSHA requirements

The Line-Up: Which Rig Is Right For Me?



16 Foot Bumper-Pull Trailer

Economy starter rig without sacrifice — designed for urethane foam insulation applications.

Features included:

- 8.5 ft. wide, 7.5 ft. interior height, twin 3,500 lb. axel
- Graco E20 Reactor
- 17.5 kW gasoline or 20 kW diesel generator installed in "Dog House"
- 3.5 HP electric compressor
- Twin Barrel Brace to hold two sets of material
- 48" curb side door with hose hatch, and rear ramp door
- Shore power hook-up

For detailed information, turn to pages 5-6



20 Foot Bumper-Pull Trailer

Premium rig designed for foam and coating applications — has the room and payload for almost every application while still in a small enough package to easily maneuver around job sites. Features included:

- 8.5 ft. wide, 7.5 ft. interior height, twin 7,000 lb. axel
- Choose from a variety of Graco spray equipment, including electric, hydraulic, and pneumatic Reactors
- 20 kW and 40 kW generators (larger sizes available in custom applications)
- Choose from a variety of piston and screw compressors to meet your air needs
- Twin Barrel Brace to hold two sets of material
- 48" curb side door with hose hatch, and rear swinging barn doors
- Shore power hook-up

For detailed information, turn to pages 7-8

Questions? Need advice? Call CJ Spray toll-free today! 1-888-CJSPRAY (1-888-257-7729)



28 Foot Gooseneck Trailer

Premium rig designed for foam and coating applications — longer gooseneck provides added payload, additional room for more barrels and the better pulling of a gooseneck trailer. Features included:

- 8.5 ft. wide, 7.5 ft. interior height, twin 8,000 lb. axel
- Choose from a variety of Graco spray equipment, including electric, hydraulic, and pneumatic Reactors
- 20 kW and 40 kW generators (larger sizes available in custom applications)
- Choose from a variety of piston and screw compressors to meet your air needs
- Triple Barrel Brace to hold three sets of material
- 48" curb side door with hose hatch, and rear swinging barn doors
- Shore power hook-up

For more information, turn to pages 9-10



Box Truck

Box Trucks provide big payload in small packages that are easy to maneuver at any job site. CJ Spray can perform a custom installation in your box truck — contact us for box truck requirements. Features included:

- Choose from a variety of Graco spray equipment, including electric, hydraulic and pneumatic Reactors
- 20 kW and 40 kW generators (larger sizes available in custom applications)
- Choose from a variety of piston and screw compressors to meet your air needs
- Twin or Triple Barrel Braces available depending on length and rating of truck
- Shore power hook-up

For more information, turn to pages 11-12

16 Foot Bumper Pull Trailer



Starter Price Without Sacrifice

Welcome to the CJ Spray starter rig. Designed specifically for starting out in the urethane foam insulation market, where being successful means starting without one hand tied behind your back. We understand that to be successful you need a certain level of functionality and sustainability — that is why our starter rig is uncompromising, while still being priced at a “starter” budget. Anything less just won’t due.

Welcome to the Doghouse

OSHA requires all internal combustion engines to be in a separate room away from the work environment. Welcome to the doghouse. This layout allows a sleek 16 foot economy trailer to be as roomy as a 20 foot premium trailer without the cost, added maneuverability issues or the price tag of a “big rig”.

Choose Your Generator:

17.5 kW / Gas

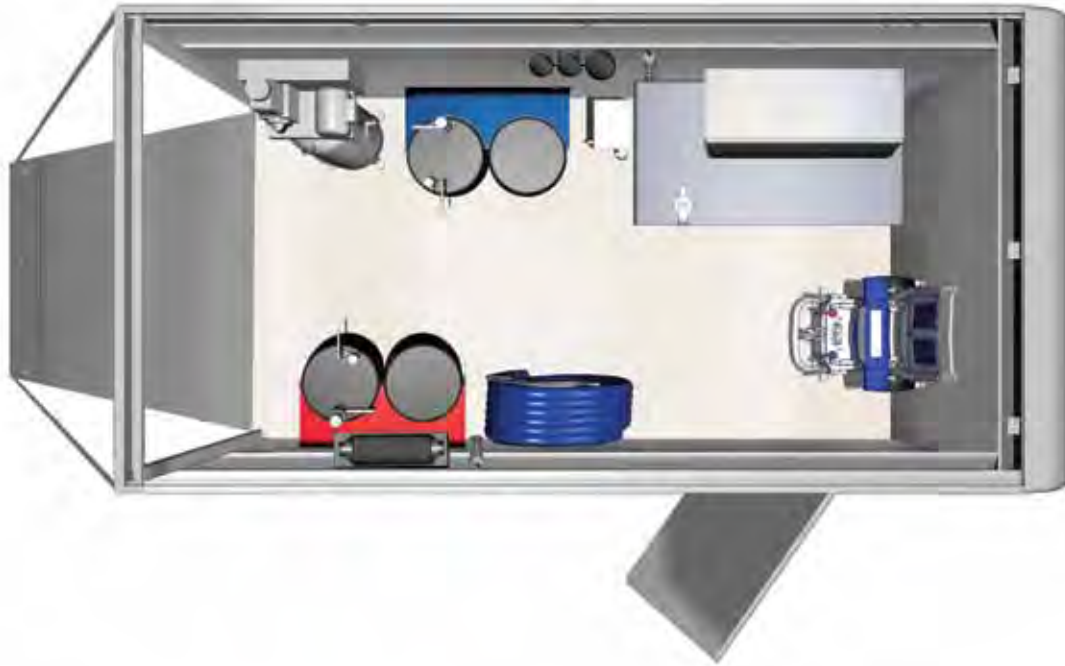
Gas driven generator from Generac; a world leader in generators. Gas operated “portable” generators offer low cost of entry, but less durability. The Dog House allows you to easily pull out the generator on the EZ Slide and operate the generator outside the trailer. This gives you OSHA compliance and gives extra cooling for maximum generator life.



20 kW / Diesel

Upgrade to the diesel driven generator from Cummins Onan. Get years of performance and reliability from a commercial stand-by diesel generator.



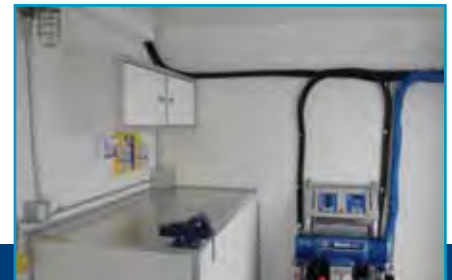
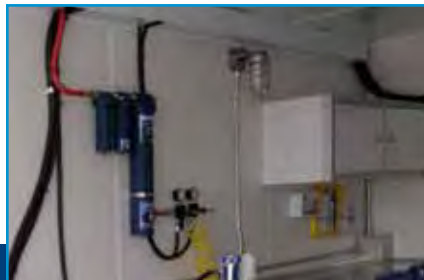


Standard Features/Equipment:

- Graco Reactor E-20 with circulation kit
- Graco T:1 Feed Pumps
- Two Graco Fusion AP guns (other models available)
- 160 ft. heated hose standard
- 17.5 kW gasoline generator
- 3.5 HP electric C-Aire air compressor
- 3 Stage Desiccant DryAire System
- Barrel brace system for two sets of materials
- Work bench, with vise, blow gun and overhead aluminum premium cabinet
- Urethane foam insulated walls and ceiling
- Shore power hook-up
- Heated hose wrap with heated hose circulation kit
- 48 in. curb-side door with hose hatch
- Ramp rear door
- Fire extinguisher, first-aid kit and eyewash station
- Epoxy floor coating, white board walls, white ceiling board, and premium white aluminum trim throughout trailer
- Two 3,500 lb. axles
- 7.5 ft. interior heights
- LED lights and accents
- RV style locks and latches
- Bogey wheels at rear of trailer to prevent damage
- Trailers from United with 5 year limited warranty

Optional Equipment:

- Upgrade to 20kW diesel generator
- Electric refrigerated air drier upgrade
- Heat Systems – AirTronic, 110V, 240V, Band Heaters
- Air Conditioner (with 110V heat)
- Upgrade to 210 ft.. of heated hose
- Fresh air supply systems
- Protective clothing and spill containment
- Gun cleaners and gun cleaning kits



Questions? Need advice? Call CJ Spray toll-free today! 1-888-CJSPRAY

20 Foot Bumper Pull Trailer



Mobile Spray Rigs Designed For the Professional Contractor

Welcome to the ultimate in mobile spray packages. The 20 ft. trailer is large enough to handle any type or size of spray equipment while being in a small package that is maneuverable and can be handled with smaller pick-up trucks.

Choose the Right Sprayer

What Graco Reactor is right for you depends on your application and plan. There are two main categories of Reactors: Foam and Coatings. They are both similar and do the same thing, but coating proportioners are capable of higher pressures to atomize heavier coatings. The additional pressure requires more horsepower, so Reactors for coatings cost more than Reactors for foam.

Within those two categories we also have three types of Reactors: Air, Electric, and Hydraulic, which refers to how the pumps are driven. Air operated Reactors use an air motor to drive the pump lowers which requires a large air compressor that makes them uncommon in mobile rig applications. Electric Reactors are a great balance of performance and price and have quickly become the most popular in the marketplace. Hydraulic Reactors have great durability and can have higher outputs and prices than the electric series Reactors.

For detailed information see our Graco Reactor brochure

air

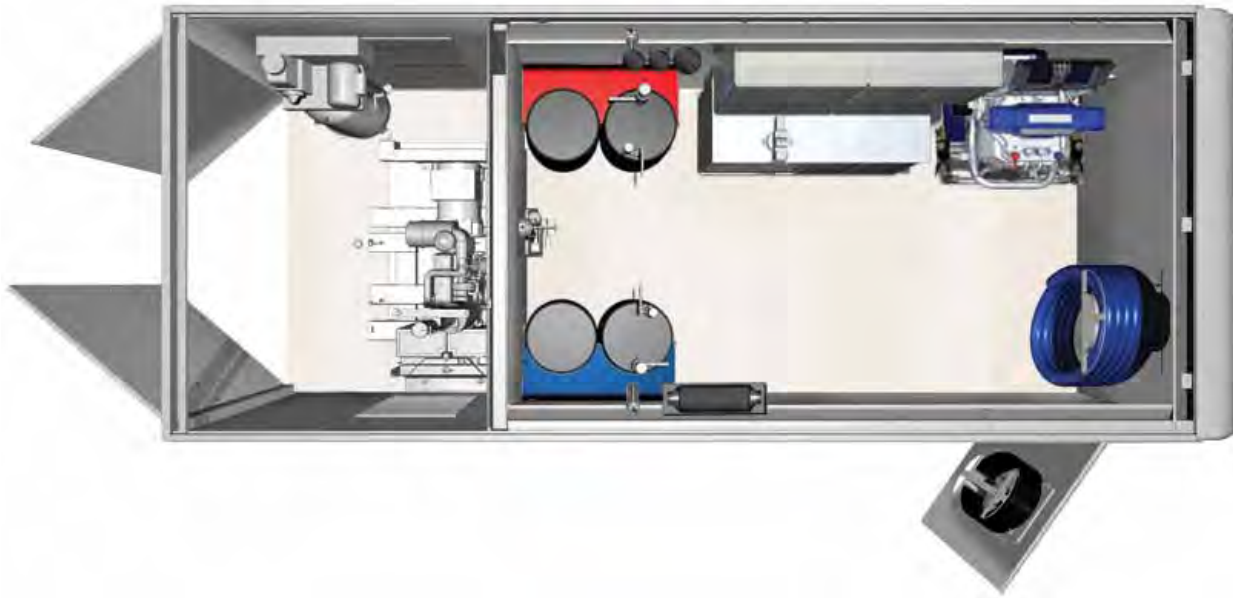


electric



hydraulic





Standard Features/Equipment:

- Urethane foam insulation sprayed in walls, ceiling and floor
- White board walls and ceiling, with white aluminum trim accent for a professional fit and finish
- Work bench, with vise, blow gun, grinder, overhead aluminum cabinet with light, and 6 drawer tool box
- Diamond Plate floor in spray room
- Epoxy floor coating in utility room
- Shore power hook-up (110 volt)
- Barrel brace system designed for two sets of material
- Heated Hose Wrap
- Spare parts kit for selected spray gun
- Two fire extinguishers, eye wash station and first aid kit
- 8.5 ft. interior width, and 7.5 ft. interior height
- Twin 7,000 lb. axles (14,000 gvwt)
- Electric Brakes
- Bogey wheels in rear of trailer to prevent damage
- 48 in curb side door with hose hatch
- Rear swinging barn doors
- RV style locks and latches
- Spare tire mounted on nose
- LED lights and accents
- Trailers from United carry a 5 year limited warranty

Optional Equipment:

- Choose Your Graco Spray Equipment: Reactor, Feed Pumps, Hose Length and Spray Gun
- Choose Your Generator, Air Compressor, and Air Drying Equipment
- Heated material hoppers
- Agitators
- Heat System – AirTronic, 110V, 220V, Band Heaters
- Air Conditioner (includes 110V heat)
- Fresh air supply system
 - Martech Grade D Breathable Air System (Runs off compressor in trailer)
 - Allegro portable ambient air pump (110 volt)
- Protective clothing and spill containment kits
- Gun cleaners and gun cleaning kits



Build and price your own Mobile Spray Rig at www.cjspray.com/buildmyrig

28 Foot Gooseneck Trailer



Mobile Spray Rigs Designed For the Professional Contractor

Welcome to the ultimate in mobile spray packages. The 28 ft. Gooseneck trailer provides more room and has larger axles to carry more material. The gooseneck provides greater maneuverability at the job site and easier towing down the road.

Choose the Right Generator

The right generator depends on the power required by the equipment in the spray rig. There are two major electrical components in each rig: the Reactor and the air compressor.

Reactors have electric motors and very large electric heaters that can draw a lot of power. Electric air compressors also draw a lot of power, especially at start up. We set all of our compressors to run continuously so they do not turn on or off, which provides cleaner and more consistent power to the Reactor. The generator should still be sized to handle the initial start-up of the compressor.

There are also other electrical demands inside the trailer that add up such as compressed air driers, heater, lights, grinders, and air conditioners. To properly size the generator add up the electrical requirements and provide a 25% cushion.

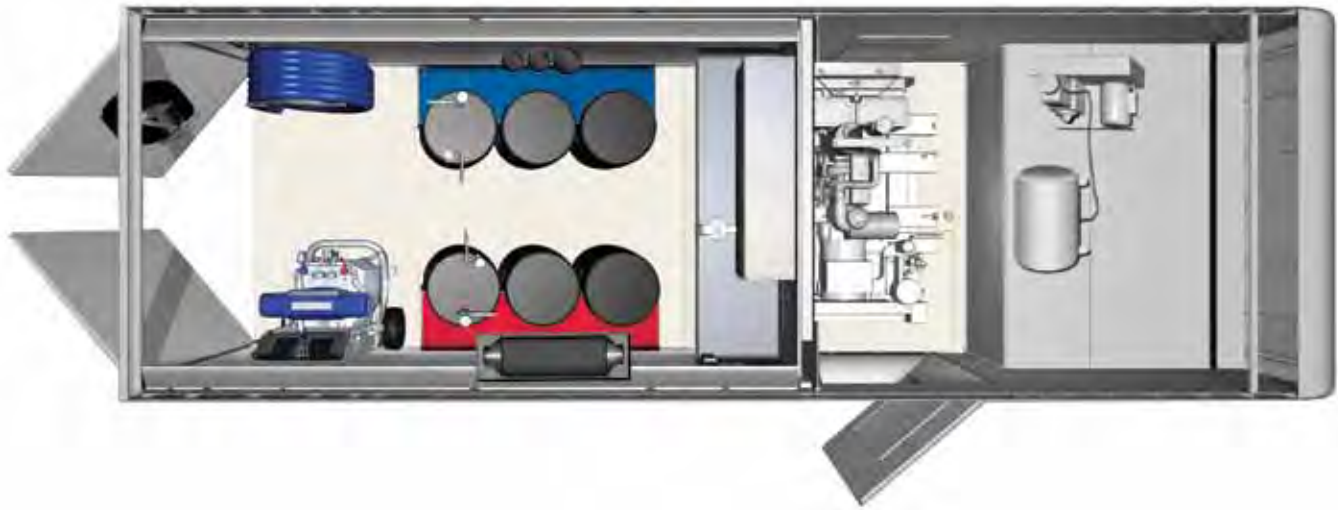
In most applications the E20 Reactor requires a 20 kW generator and everything larger requires a 40 kW.

20 kW



40 kW



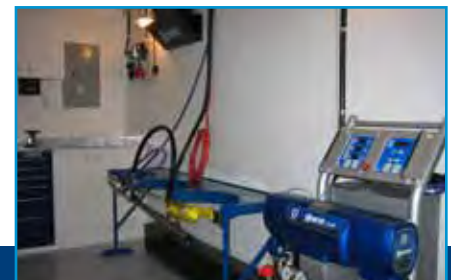


Standard Features/Equipment:

- Urethane foam insulation sprayed in walls, ceiling and floor
- White board walls and ceiling, with white aluminum trim accent for a professional fit and finish
- Work bench with vise, blow gun, grinder, overhead aluminum cabinet with light and 6 drawer tool box
- Diamond Plate floor in spray room
- Epoxy floor coating in utility room
- Shore power hook-up (110 volt)
- Barrel brace system designed for three sets of material
- Heated Hose Wrap
- Spare parts kit for selected spray gun
- Two fire extinguishers, eye wash station and first aid kit
- 8.5 ft.. interior width and 7.5 ft.. interior height
- Twin 8,000 lb. axles (16,000 gvwt)
- Electric Brakes
- Bogey wheels in rear of trailer to prevent damage
- 48 in. curb side door with louver installed
- Rear swinging barn doors with hose hatches
- RV style locks and latches
- Spare tire mounted in cab over
- LED lights and accents
- Trailers from United carry a 5 year limited warranty

Optional Equipment:

- Choose Your Graco Spray Equipment: Reactor, Feed Pumps, Hose Length, and Spray Gun
- Dual proportioner layout available
- Choose Your Generator, Air Compressor, and Air Drying Equipment
- Heated material hoppers
- Agitators
- Heat System – AirTronic, 110V, 220V, Band Heaters
- Air Conditioner (includes 110V heat)
- Fresh air supply system
 - Martech Grade D Breathable Air System (Runs off compressor in trailer)
 - Allegro portable ambient air pump (110 volt)
- Protective clothing and spill containment kits
- Gun cleaners and gun cleaning kits



Questions? Need advice? Call CJ Spray toll-free today! 1-888-CJSPRAY

Box Truck



Custom Outfitted Box Trucks to Your Specifications

Supply your own box truck and have CJ Spray customize it for your application. Box trucks are easy to maneuver and can reach areas in rugged job sites that trailers cannot. They are capable of hauling heavy loads and are easy to park where space is limited. Contact CJ Spray for truck requirements and your personalized custom quote.

Choose the Right Compressor

Like sizing a generator, the right compressor will be dependent on the air requirement (scfm) of your tools. Mobile spray rigs use several pieces of air operated equipment, all of which put a demand on the air compressor. The drum pumps, spray guns, agitators (optional), and fresh air supply systems (optional) all require compressed air. Other tools in your trade may also require compressed air. For example scarifiers used in the foam industry can require up to 30 scfm of air.

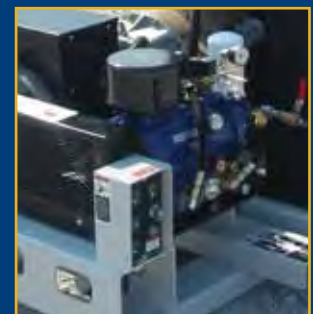
Another consideration is space and weight. CJ Spray offers two types of compressors: electric driven piston compressors and a belt driven screw compressor mounted on the generator. Electric compressors are cost effective and are available on vertical or horizontal mounted tanks. Vertical tanks are used in our 16 ft., 20 ft. and box truck models — the horizontal tanks are mounted above the cab-over of our gooseneck trailers.

Our screw compressor option is mounted on our 40 kW generator and runs directly off the diesel engine — so there is no electrical requirement. In most applications a tank is not required saving weight and space making the screw compressor a great value option for 20 ft. bumper pull trailers.

electric



screw





Standard Features/Equipment:

- Urethane foam insulation sprayed in walls, ceiling and floor
- White board walls and ceiling, with white aluminum trim accent for professional fit and finish look
- Work bench, with vise, blow gun, grinder, overhead aluminum cabinet with light and 6 drawer tool box
- Diamond Plate floor in spray room
- Epoxy floor coating in utility room
- Shore power hook-up (110 volt)
- Barrel brace system designed for two or three sets of material
- Heated Hose Wrap
- Spare parts kit for selected spray gun
- Two fire extinguishers, eye wash station and first-aid kit
- Installing two louvers for generator

Optional Equipment:

- Choose Your Graco Spray Equipment: Reactor, Feed Pumps, Hose Length and Spray Gun
- Dual proportioner layout available
- Choose Your Generator, Air Compressor and Air Drying Equipment
- Heated material hoppers
- Agitators
- Heat System – AirTronic, 110V, 220V, Band Heaters
- Air Conditioner (includes 110V heat)
- Fresh air supply system
 - Martech Grade D Breathable Air System (Runs off compressor in trailer)
 - Allegro portable ambient air pump (110 volt)
- Protective clothing and spill containment kits
- Gun cleaners and gun cleaning kits



Build and price your own Mobile Spray Rig at www.cjspray.com/buildmyrig

Spray Foam Rigs at a Glance



	16 ft.	20 ft.	28 ft.	Box Truck
GVWR / Hitch	7,000 lb. Tag-A-Long	14,000 lb. Tag-A-Long	16,000 lb. Gooseneck	N/A
Generator	17.5 kW Gas 20 kW Diesel	20 kW Diesel 40 kW Diesel	20 kW Diesel 40 kW Diesel	20 kW Diesel 40 kW Diesel
Compressor	3.5 HP Electric Vertical	5 HP Electric Vertical 7.5 HP Electric Vertical Screw, Generator Mount	5 HP Electric Horizontal 7.5 HP Electric Horizontal Screw, Generator Mount	5 HP Electric Vertical 7.5 HP Electric Vertical Screw, Generator Mount
Trailer Size	16' Flat Nose	20' Flat	28' Flat	Custom
Shore Power	110V / 230 V	110V	110V	110V
Material Storage	Two Sets	Two Sets	Three Sets	Two / Three Sets
Transfer Pumps	Graco T1	Graco T1 / T2	Graco T1 / T2	Graco T1 / T2
Door Style	Ramp	Barn Door	Barn Door	Barn Door / Roll-Up

Before Buying a Spray Foam Rig: A Checklist of Important Questions

	CJ Spray	Competition
Does the trailer have properly rated axle support for the load?	<input checked="" type="checkbox"/>	<input type="checkbox"/>
Is the spray rig configured and built by a company that is an authorized distributor for each manufacturer of the equipment used?	<input checked="" type="checkbox"/>	<input type="checkbox"/>
Is the spray rig insulated? Is so was it spray foamed?	<input checked="" type="checkbox"/>	<input type="checkbox"/>
Has the installation of the components been approved by the respective manufacturers so that it does not void the warranty?	<input checked="" type="checkbox"/>	<input type="checkbox"/>
Does the door have a closeable hose hatch?	<input checked="" type="checkbox"/>	<input type="checkbox"/>
Has the trailer been weight certified to pull well down the road?	<input checked="" type="checkbox"/>	<input type="checkbox"/>
Does the rig appear professional and well designed?	<input checked="" type="checkbox"/>	<input type="checkbox"/>
Does the manufacturer train, service, and support the equipment after the sale?	<input checked="" type="checkbox"/>	<input type="checkbox"/>
Does the rig meet all OSHA and NIOSH requirements?	<input checked="" type="checkbox"/>	<input type="checkbox"/>

Accessories and Options

CJ Mobile Rigs have many options and accessories so you can tailor the rig to your exact needs. These items can help you do your job faster, safer and more efficiently.

Manifold Circulation Kit - Reduce material waste and keep your trailer cleaner with this kit. Includes hoses, drum return tubes and desiccant driers.

Heated Hose Circulation Kit - Allows for easy circulation of material through entire system to prevent isocyanate crystallization during periods of down time. Reduces time required to warm the heated hose with coatings or ½ lb foam.

3 Stage Desiccant Dryer - Combo unit consisting of moisture trap, coalescer and desiccant bead filter removes moisture from compressed air with a low up front cost.

Electric Refrigerated Air Dryer - Recommended upgrade from three stage dryer, ensuring dry air without consumable desiccant beads.

Allegro Fresh Air Compressor System - Cost effective fresh air supply pump is portable and 110 volt.

Martech Fresh Air Supply System - Mounts in trailer and converts air from spray rig compressor to Grade D breathable air.

Electric Heaters - 110 Volt and 240 volt options. 240 Volt has more BTUs, but only runs with the generator. 110 Volt model runs on generator and shore power but has less BTUs.

AirTronic Heater - The ultimate heating option. Runs on 12 volt DC power and diesel fuel. Set thermostat on the wall and the AirTronic Heater will maintain temperature burning only 1 gallon of diesel per 16 hours.

Drum Mixer - CJ Mobile Rigs are designed to easily add pneumatic drum agitators for a wide range of materials.

Drum Band Heaters with Thermostat - Warm drums faster with band heaters. CJ Mobile Rigs come with outlets and power available to add drum heaters at any time.

Air Conditioner - Good addition for foam contractors in hot climates.



Questions? Need advice? Call CJ Spray toll-free today! 1-888-CJSPRAY

