



Mobile Spray Rigs



Self-Contained System for Foam and Coating Applications



Designed for Performance. Built to Last.



CJ Spray Mobile Spray Rigs are built tough for foam and coating applications.

CJ Spray offers a full line of custom turn-key mobile spray rigs designed for the task at hand. From residential insulation to pipe coating CJ Spray has you covered.

Built Solid to Support Equipment and Materials

CJ Mobile Rigs are designed specifically for the urethane foam and coatings market. We understand what it takes for a contractor to be successful, and to stay up and running — attention to detail is critical when dealing with moisture sensitive isocyanate and resin with blowing agent that can easily froth.

Coating Applications

Our rigs can handle the most difficult to spray coatings — with combinations specifically designed for Polyurea, Urethane, and Epoxy. We can customize our rigs with off-ratio pumps, agitators, heated hoppers and many other accessories to handle the most demanding products.

Backed by Warranty

There are several components that make up a CJ Spray Mobile Spray Rig — and we use only the best. You can trust that CJ Spray only selects premium grade equipment manufacturers with national service networks to keep you going.

Questions? Need advice? Call CJ Spray toll-free today! 1-888-CJSPRAY (1-888-257-7729)

Standard Features

Premium Mobile Spray Rigs have Premium Standard Features*

**Not all features included on Eco Series Rigs*

CJ Spray Mobile Spray Rigs come complete with everything you need to get started AND keep going. Everything is included up front... no nickel and dime later.



Heated Hose Rack

Holds up to 410 ft. of hose. Designed with no sharp edges to tear or fray protective scuff jacket. Includes mounting bracket for heated hose circulation manifold.



Fit and Finish

Interior of trailer is lined with a white laminated plywood (not just painted). White aluminum trim in corners keeps the fluid and air hoses concealed for a clean and professional look.



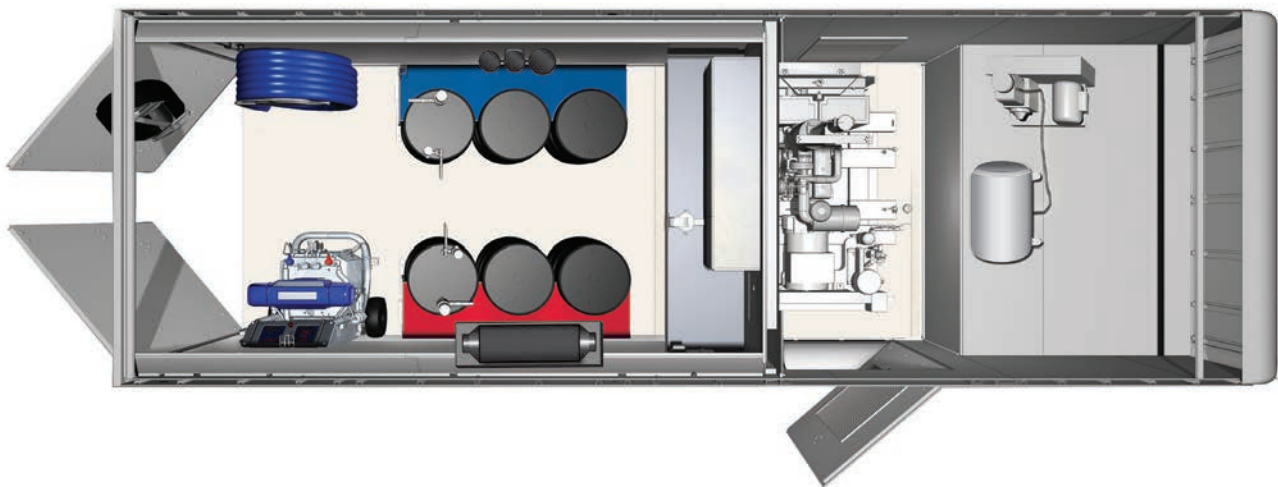
Fully Insulated

CJ Spray Mobile Rigs are fully insulated with sprayed polyurethane foam for the best insulation while adding structural strength to the trailer.



Trailer Specs

Trailer manufactured by American Hauler with 7.5 ft. tall interior height, double I-beam construction with support studs on 16 inch centers. Includes rear bogey wheels, and is backed with a 3 year warranty.



Work Bench and Cabinet

Galvanized steel work bench with vise, grinder and overhead white aluminum locking cabinet.



Barrel Braces

Engineered to hold two or three sets of material securely for a mobile application.



Generator/Air Compressor

All rigs come with generators and air compressors from leading manufacturers and are approved installations backed by warranty.



Separated Utility Room

Generator is installed in separate utility compartment, sealed from the spray/work space — reducing noise and exposure to emissions.



The Lineup: Which Rig is Right for Me?

Eco Rig



Economy starter rig without sacrifice — designed for urethane foam insulation applications.

Features included:

- 7 FT. wide, 6.6 ft. interior height, 7000 lb. GVWR
- Graco E20 or Titan FR28 Reactor
- 18kW gasoline generator on wheels
- Reactor shore power option
- 3 HP electric (shore power) or 5 HP gas compressor
- E-track barrel restraint system
- 36" curbside door with hose hatch, and rear ramp door

For detailed information, turn to pages 5-6

16-Foot Bumper-Pull Trailer



Economy starter rig without sacrifice — designed for urethane foam insulation applications.

Features included:

- 8.5 ft. wide, 7.5 ft. interior height, 9,950 lb. GVWR
- Graco E20 Reactor
- 17.5 kW / 18 kW gasoline (on slide) or 20 kW diesel generator installed in the "Dog House"
- 3.5 HP electric or 5 HP gas compressor
- Twin Barrel Brace to hold two sets of material
- 48" curb side door with hose hatch, and rear ramp door

For detailed information, turn to pages 7-8

20-Foot Bumper-Pull Trailer



Premium rig designed for foam and coating applications with room and payload for almost every application while still in a small enough package to easily maneuver around job sites.

- 8.5 ft. wide, 7.5 ft. interior height, 14,000 lb. GVWR
- Choose from a variety of Graco spray equipment, including electric, hydraulic, and pneumatic Reactors
- 40 kW generator (larger sizes available in custom applications)
- Choose from a variety of piston and screw compressors to meet your air needs
- Twin Barrel Brace to hold two sets of material

For detailed information, turn to pages 9-10



Built Tough for Spray Foam Insulation and Coating Applications

28-Foot Gooseneck Trailer



Premium rig designed for foam and coating applications — longer gooseneck provides added payload, additional room for more barrels and the better pulling of a gooseneck trailer.

- 8.5 ft. wide, 7.5 ft. interior height, 16,000 lb. GVWR
- Choose from a variety of Graco spray equipment, including electric, hydraulic, and pneumatic Reactors
- 40 kW generator (larger sizes available in custom applications)
- Choose from a variety of piston and screw compressors to meet your air needs
- Triple Barrel Brace to hold three sets of material

For more information, turn to pages 11-12

Box Truck



Box Trucks provide big payload in small packages that are easy to maneuver at any job site. CJ Spray can perform a custom installation in your box truck.

- Choose from a variety of Graco spray equipment, including electric, hydraulic and pneumatic Reactors
- 40 kW generator (larger sizes available in custom applications)
- Choose from a variety of piston and screw compressors to meet your air needs
- Twin or Triple Barrel Braces available depending on length and rating of truck

For more information, turn to pages 13-14

AiMS Trailer



Bigger is not always better. Our AiMS trailer offers the same performance as our 20 and 28 ft turn-key trailers in a smaller, more compact package.

- 9,950 lb GVWR
- Powder coated enclosure
- Barrel Brace system designed for two sets of material
- Electric brakes
- EZ Slide heated hose rack
- Exterior (locking) tool box
- Manifold circulation kit standard
- Spare parts kit for selected spray gun and Reactor

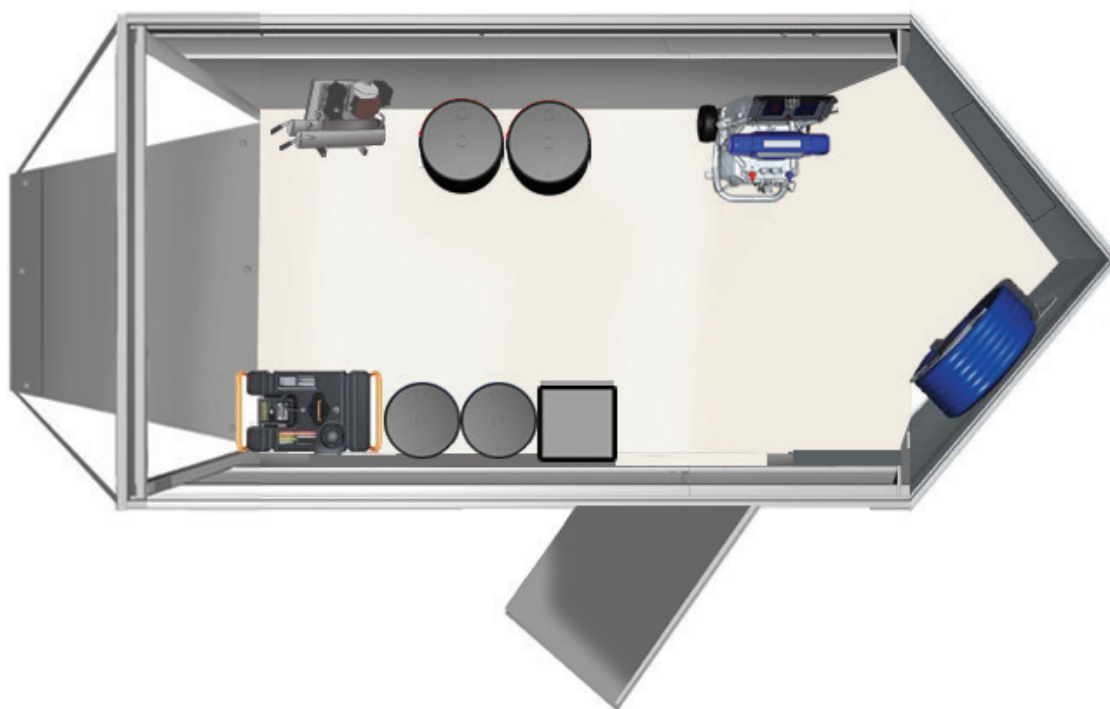
For detailed information, turn to pages 15-16



All the equipment you need to start spraying foam

Welcome to the CJ Spray starter rig. Designed specifically for starting out in the residential urethane foam insulation market, where being successful means starting without one hand tied behind your back. We understand that to be successful you need a certain level of functionality and sustainability — that is why our starter rig is uncompromising, while still being priced at a “starter” budget. Anything less just won’t due.





Standard Features/Equipment:

- 16 ft V-nose, 7 FT. wide, 6.6 ft. interior height, 7000 lb. GVWR
- Graco E20 or Titan FR28 Reactor
- Reactor shore power option
- 3 HP electric (shore power) or 5 HP gas compressor
- E-track barrel restraint system
- 36" curbside door with hose hatch, and rear ramp door
- Urethane foam insulated walls and ceiling
- White board ceiling, plywood walls
- 6 drawer tool box with work top
- 3 Stage Desiccant Dry Air System
- Epoxy floor coating
- Shore power hook-up (110 volt)
- Hose rack set-up for 310' heated hose
- Rear trailer supports
- Fire extinguisher, eyewash station, first aid kit

Optional Equipment:

- 18kW gasoline generator on wheels
- Electrical refrigerated air drier upgrade
- Heat Systems—Airtronic, 110V, Barrel Blankets
- Gun cleaners and gun
- Circulation Kits
- Ambient Air systems (Allegro, Bullard)
- Protective clothing and spill containment



Questions? Need advice? Call CJ Spray toll-free today! 1-888-CJSPRAY

16 ft Bumper Pull Trailer

Built Solid to Support Equipment and Materials



Heavy-Duty Construction for Long Lasting Performance

Our Premium 16-ft Bumper-Pull trailer is designed to last and take a beating throughout the years. The next step-up from our Eco Rig, the 16-ft Bumper Pull trailer is built for professionals in the urethane foam insulation market that want their Spray Rig to perform when called upon again and again. CJ Spray is here to custom build your trailer to meet your exact spraying needs and keep you up and running for years to come.

Welcome to the Doghouse

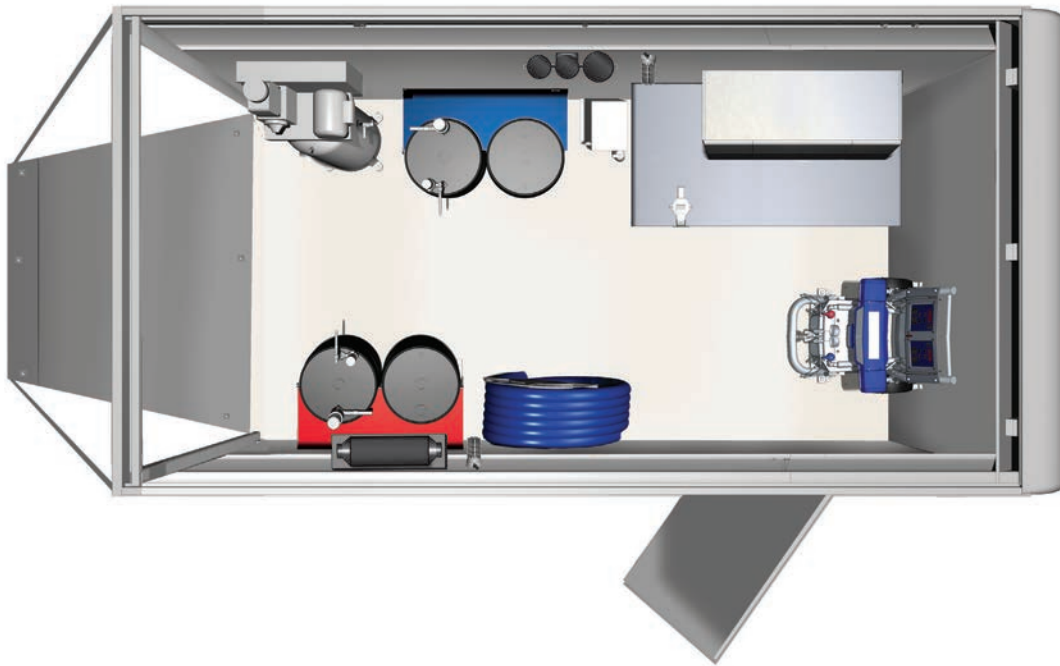
OSHA requires all internal combustion engines to be in a separate room away from the work environment. Welcome to the doghouse. This layout allows a sleek 16 foot economy trailer to be as roomy as a 20 foot premium trailer without the cost, added maneuverability issues or the price tag of a "big rig".

Gas Driven Generator:

18 kW Gas

Gas operated "portable" generators offer low cost of entry, but less durability. The Dog House allows you to easily pull out the generator on the EZ Slide and operate the generator outside the trailer. This gives you OSHA compliance and gives extra cooling for maximum generator life.



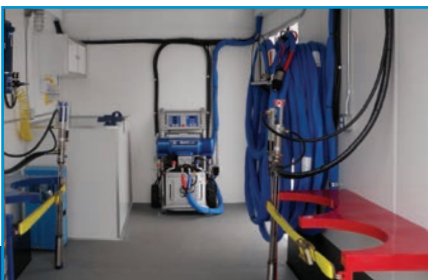


Standard Features/Equipment:

- Graco Reactor E-20, Titan FR28, PMC PH2
- Graco T:1 Feed Pumps
- Graco Fusion AP guns (other models available)
- 160 ft. heated hose standard
- 17.5 kW gasoline generator
- 5 HP gas compressor
- 3 Stage Desiccant DryAire System
- Barrel brace system for two sets of materials
- Work bench, with vise, blow gun and overhead aluminum premium cabinet
- Urethane foam insulated walls and ceiling
- 110 V Shore power hook-up
- Hose rack
- 48 in. curb-side door with hose hatch
- Ramp rear door
- Fire extinguisher, first-aid kit and eyewash station
- Epoxy floor coating, white board walls, white ceiling board, and premium white aluminum trim throughout trailer
- Tandem axles (5,200 GVWR)
- 7.5 ft. interior heights
- LED lights and accents
- RV style locks and latches
- Bogey wheels at rear of trailer to prevent damage
- Trailers from American Hauler with 3 year limited warranty

Optional Equipment:

- Upgrade to 20kW diesel or 18kW gas generator
- Electric refrigerated air drier upgrade
- Heat Systems – AirTronic, 110V, 240V, Band Heaters
- Air Conditioner (with 110V heat)
- Circulation Kits
- Upgrade to 210 ft.. of heated hose
- Fresh air supply systems
- Protective clothing and spill containment
- Gun cleaners and gun cleaning kits



Questions? Need advice? Call CJ Spray toll-free today! 1-888-CJSPRAY

20 ft Bumper Pull Trailer

Premium Rig Designed for Foam and Coating Applications



Mobile Spray Rigs Designed For the Professional Contractor

Welcome to the ultimate in mobile spray packages. The 20 ft. trailer is large enough to handle any type or size of spray equipment while being in a small package that is maneuverable and can be handled with smaller pick-up trucks.

Choose the Right Sprayer

What Graco Reactor is right for you depends on your application and plan. There are two main categories of Reactors: Foam and Coatings. They are both similar and do the same thing, but coating proportioners are capable of higher pressures to atomize heavier coatings. The additional pressure requires more horsepower, so Reactors for coatings cost more than Reactors for foam.

Within those two categories we also have three types of Reactors: Air, Electric, and Hydraulic, with electric and hydraulic being the most viable. Air operated Reactors use an air motor to drive the pump lowers which requires a large air compressor that makes them uncommon in mobile rig applications. Electric Reactors are a great balance of performance and price and have quickly become the most popular in the marketplace. Hydraulic Reactors have great durability and can have higher outputs and prices than the electric series Reactors.

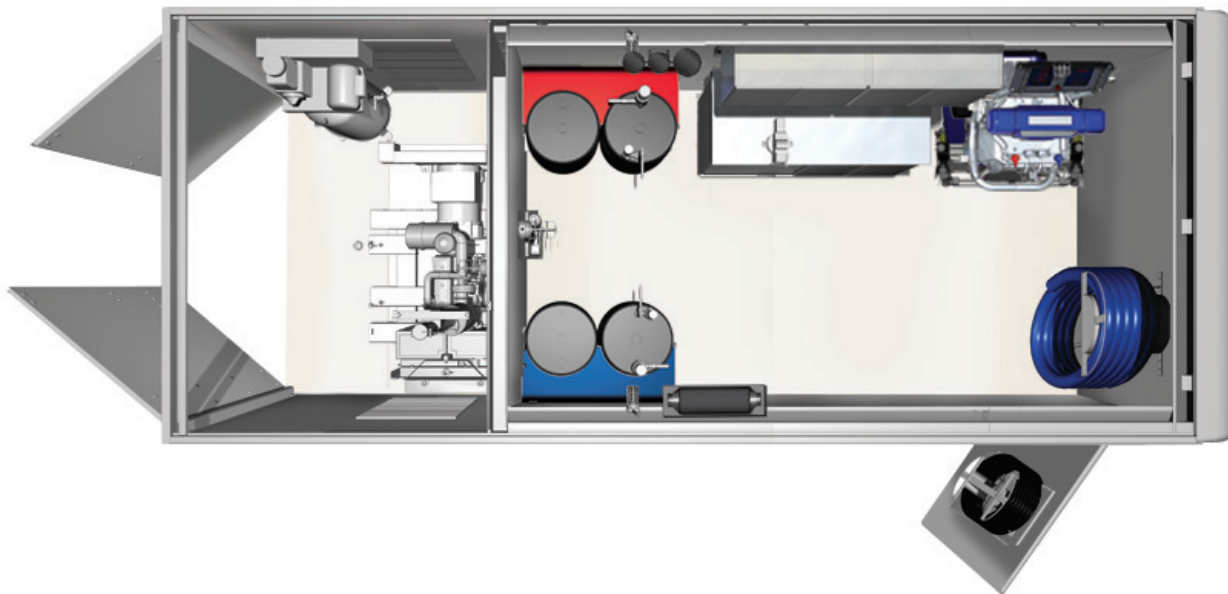
For detailed information see our Graco Reactor brochure



electric

hydraulic



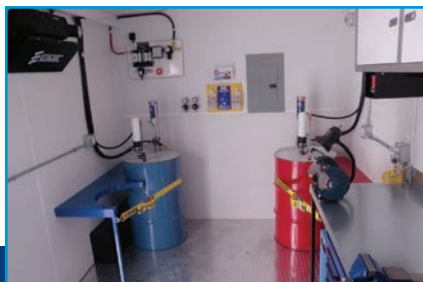


Standard Features/Equipment:

- Urethane foam insulation sprayed in walls, ceiling and floor
- White board walls and ceiling, with white aluminum trim accent for a professional fit and finish
- Work bench, with vise, blow gun, grinder, overhead aluminum cabinet with light, and 6 drawer tool box
- Diamond Plate floor in spray room
- Epoxy floor coating in utility room
- Shore power hook-up (110 volt)
- Barrel brace system designed for two sets of material
- Hose rack set-up for 410' heated hose
- Spare parts kit for selected spray gun
- Two fire extinguishers, eye wash station and first aid kit
- 8.5 ft. width, and 7.5 ft. interior height
- Tandem 7,000 lb. axles (14,000 GVWR)
- Electric Brakes
- Bogey wheels in rear of trailer to prevent damage
- 48 in curb side door with hose hatch
- Rear swinging barn doors
- RV style locks and latches
- Spare tire mounted on nose
- LED lights and accents
- Trailers from American Hauler carry a 3 year limited warranty

Optional Equipment:

- Choose Your Graco, PMC or Titan Spray Equipment: Proportioner, Feed Pumps, Hose Length and Spray Gun
- Choose Your Generator, Air Compressor, and Air Drying Equipment
- Heated material hoppers
- Agitators
- Heat System – AirTronic, 110V, 220V, Band Heaters
- RAS (Respiratory Alarm Shutdown) System
- Air Conditioner (includes 110V heat)
- Fresh air supply system
 - Martech/Bullard Grade D Breathable Air System (Runs off compressor in trailer)
 - Allegro portable ambient air pump (110 volt)
- Protective clothing and spill containment kits
- Gun cleaners and gun cleaning kits



Build and price your own Mobile Spray Rig at www.cjspray.com/buildmyrig

28 ft Gooseneck

Mobile Spray Rigs Designed for the Professional Contractor



Mobile Spray Rigs Designed For the Professional Contractor

Welcome to the ultimate in mobile spray packages. The 28 ft. Gooseneck trailer provides more room and has larger axles to carry more material. The gooseneck provides greater maneuverability at the job site and easier towing down the road.

Choose the Right Generator

The right generator depends on the power required by the equipment in the spray rig. There are two major electrical components in each rig: the Reactor and the air compressor.

Reactors have electric motors and very large electric heaters that can draw a lot of power. Electric air compressors also draw a lot of power, especially at start up. We set all of our compressors to run continuously so they do not turn on or off, which provides cleaner and more consistent power to the Reactor. The generator should still be sized to handle the initial start-up of the compressor.

There are also other electrical demands inside the trailer that add up such as compressed air driers, heater, lights, grinders, and air conditioners. To properly size the generator add up the electrical requirements and provide a 25% cushion.

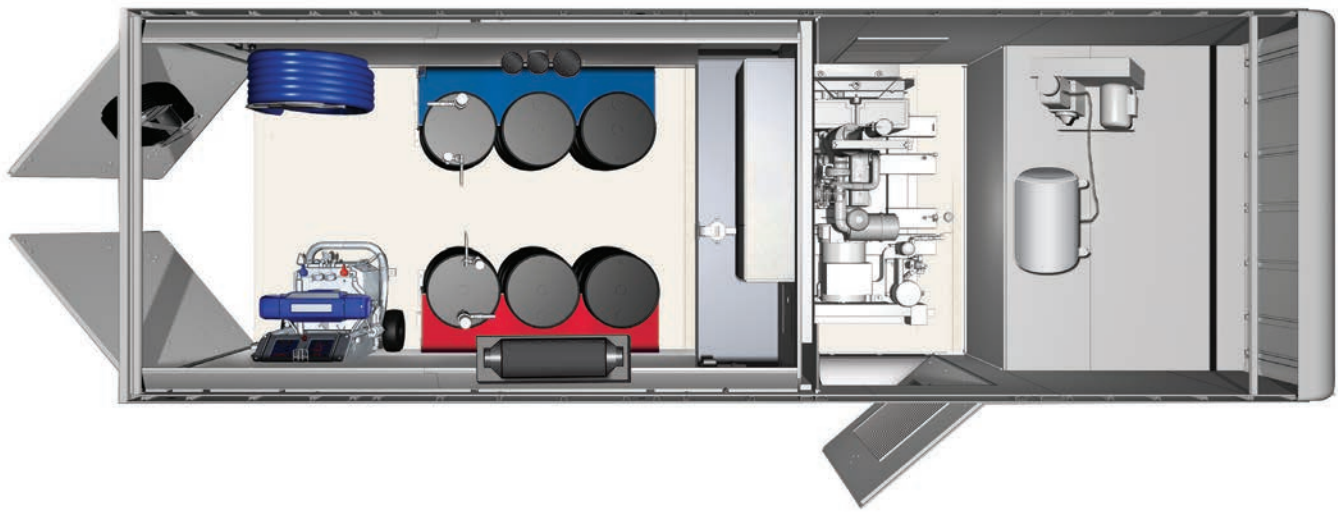
In most applications a 20 lb/min Proportioner requires a 20 kW generator and everything larger requires a 30 or 40 kW.

45 kW



40 kW





Standard Features/Equipment:

- Urethane foam insulation sprayed in walls, ceiling and floor
- White board walls and ceiling, with white aluminum trim accent for a professional fit and finish
- Work bench with vise, blow gun, grinder, overhead aluminum cabinet with light and 6 drawer tool box
- Diamond Plate floor in spray room
- Epoxy floor coating in utility room
- Shore power hook-up (110 volt)
- Barrel brace system designed for three sets of material
- Hose rack set-up for 410' heated hose
- Spare parts kit for selected spray gun
- Two fire extinguishers, eye wash station and first aid kit
- 8.5 ft.. interior width and 7.5 ft. interior height
- Tandem 8,000 lb. axles (16,000 GVWR)
- Electric Brakes
- Bogey wheels in rear of trailer to prevent damage
- 48 in. curb side door with louver installed
- Rear swinging barn doors with hose hatches
- RV style locks and latches
- Spare tire mounted in cab over
- LED lights and accents
- Trailers from American Hauler carry a 3 year limited warranty

Optional Equipment:

- Choose Your Graco, PMC or Titan Spray Equipment: Proportioner, Feed Pumps, Hose Length and Spray Gun
- Dual proportioner layout available
- Choose Your Generator, Air Compressor, and Air Drying Equipment
- Heated material hoppers
- Agitators
- Heat System – AirTronic, 110V, 220V, Band Heaters
- RAS (Respiratory Alarm Shutdown) System
- Air Conditioner (includes 110V heat)
- Fresh air supply system
 - Martech/Bullard Grade D Breathable Air System (Runs off compressor in trailer)
 - Allegro portable ambient air pump (110 volt)
- Protective clothing and spill containment kits
- Gun cleaners and gun cleaning kits



Questions? Need advice? Call CJ Spray toll-free today! 1-888-CJSPRAY

Box Truck

Big Payload in Small Packages that are Easy to Maneuver



Custom Outfitted Box Trucks to Your Specifications

Supply your own box truck and have CJ Spray customize it for your application. Box trucks are easy to maneuver and can reach areas in rugged job sites that trailers cannot. They are capable of hauling heavy loads and are easy to park where space is limited. Contact CJ Spray for truck requirements and your personalized custom quote.

Choose the Right Compressor

Like sizing a generator, the right compressor will be dependent on the air requirement (scfm) of your tools. Mobile spray rigs use several pieces of air operated equipment, all of which put a demand on the air compressor. The drum pumps, spray guns, agitators (optional), and fresh air supply systems (optional) all require compressed air. Other tools in your trade may also require compressed air. For example scarifiers used in the foam industry can require up to 30 scfm of air.

Another consideration is space and weight. CJ Spray offers two types of compressors: electric driven piston compressors and a belt driven screw compressor mounted on the generator. Electric compressors are cost effective and are available on vertical or horizontal mounted tanks. Vertical tanks are used in our 16 ft., 20 ft. and box truck models — the horizontal tanks are mounted above the cab-over of our gooseneck trailers.

Our screw compressor option is mounted on our 40 kW generator and runs directly off the diesel engine — so there is no electrical requirement. In most applications a tank is not required saving weight and space making the screw compressor a great value option for 20 ft. bumper pull trailers.

electric



screw





Standard Features/Equipment:

- Urethane foam insulation sprayed in walls, ceiling and floor
- White board walls and ceiling, with white aluminum trim accent for professional fit and finish look
- Work bench, with vise, blow gun, grinder, overhead aluminum cabinet with light and 6 drawer tool box
- Diamond Plate floor in spray room
- Epoxy floor coating in utility room
- Shore power hook-up (110 volt)
- Barrel brace system designed for two or three sets of material
- Hose rack set-up for 410' heated hose
- Spare parts kit for selected spray gun
- Two fire extinguishers, eye wash station and first-aid kit
- Installing two louvers for generator

Optional Equipment:

- Choose Your Graco, PMC or Titan Spray Equipment: Proportioner, Feed Pumps, Hose Length and Spray Gun
- Dual proportioner layout available
- Choose Your Generator, Air Compressor and Air Drying Equipment
- Heated material hoppers
- Agitators
- Heat System – AirTronic, 110V, 220V, Band Heaters
- RAS (Respiratory Alarm Shutdown) System
- Air Conditioner (includes 110V heat)
- Fresh air supply system
 - Martech/Bullard Grade D Breathable Air System (Runs off compressor in trailer)
 - Allegro portable ambient air pump (110 volt)
- Protective clothing and spill containment kits
- Gun cleaners and gun cleaning kits



Build and price your own Mobile Spray Rig at www.cjspray.com/buildmyrig



Tow Vehicle Fuel Consumption

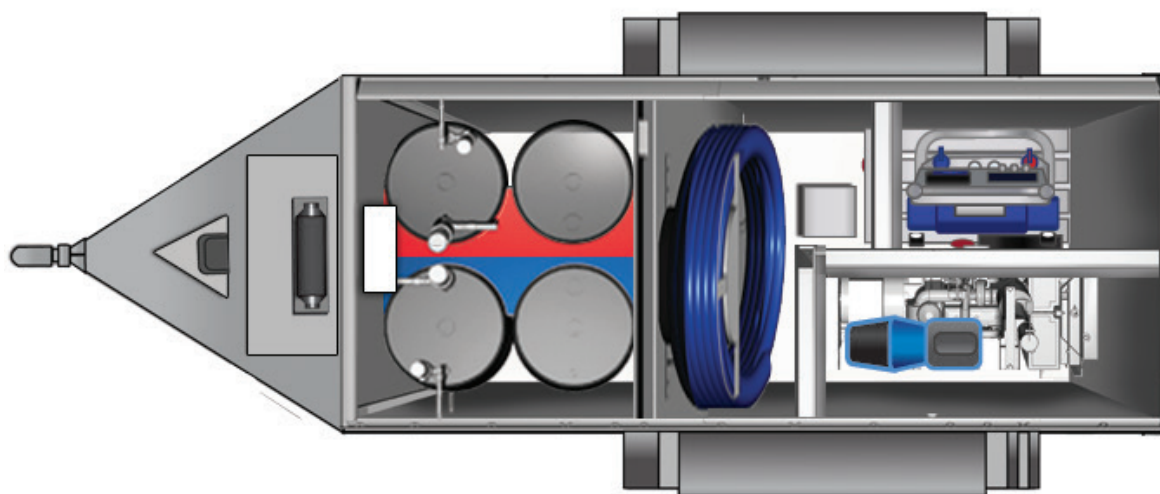
	Diesel Truck	1/2 Ton Truck	Formula
Miles Per Gallon	7.5	10	A
\$ Per Gallon	\$3.90	\$3.31	B
Weekly Miles	600		C
Total Weekly Fuel Cost	\$312	\$199	$D=(C/A) \cdot B$
Total Weekly Savings	\$113		
Savings Percentage	36%		
Total Annual Savings	\$5,783.40		

Generator Fuel Consumption

	Traditional 40 kW	Integrated Reactor (22 kW)	Formula
Gallons Per Hour	2.25	.75	A
\$ Per Gallon	\$3.90	\$3.90	B
Weekly Hours	37		C
Total Weekly Fuel Cost	\$325	\$108	$D=(C/A) \cdot B$
Total Weekly Savings	\$216		
Savings Percentage	67%		
Total Annual Savings	\$11,038.95		

Combined Annual Savings \$16,822

VS. Traditional trailer and one-ton pickup truck



Standard Features/Equipment:

- Tandem 5,200 lb axles (9,950 lb GVWR)
- Electric brakes
- Spare tire
- Powder coated enclosure
- Barrel Brace system designed for two sets of material
- Shore power hook-up (110 volt, 20 amp)
- EZ Slide heated hose wrap
- Graco Integrated Reactor
- Two fire extinguishers, eye wash station, and first aid kit
- Locking latches
- Exterior (locking) tool box
- LED interior lighting
- Manifold circulation kit standard
- Spare parts kit for selected spray gun and Reactor
- Fully insulated

Optional Equipment:

- Heated Hose Circulation Kit allows for easy circulation of material and reduces time required to warm the heated hose with coatings or ½ lb foam.
- Allegro Fresh Air Compressor System is a cost effective fresh air supply pump is portable and 110 volt.
- Martech Fresh Air Supply System mounts in trailer and converts air from spray rig compressor to Grade D breathable air.
- RAS (Respiratory Alarm Shutdown) System
- Electric Heaters with 110 Volt and 240 volt options
- AirTronic Heater runs on 12 volt DC power and diesel fuel. Set thermostat on the wall and the AirTronic Heater will maintain temperature burning only 1 gallon of diesel per 16 hrs.
- Drum Mixer is designed to easily add pneumatic drum agitators for a wide range of materials.
- Air Conditioner for foam contractors in hot climates.

Bigger is Not Always Better

The new AiMS trailer series offers the same performance as our 20 and 28 ft turn-key trailers in a smaller, more compact package.



For more information see the AiMS specific brochure at www.cjspray.com/aims

High Production Mobile Cart

Your Portable High Production Cart with Compressor



Turn-key High Production Cart - Hook-up to Shore Power and Spray

Ideal system for commercial contractors. Designed to operate when mounted in truck or trailer, but can easily be removed when spraying high rises, or large industrial buildings. Heavy-duty 8 inch poly wheels allow for easy mobility, with 4-way fork pockets and integrated lift hooks to fly skyward. Integrated air compressor, air drying equipment, and controls make operation intuitive and in one place. Choose an electric or hydraulic proportioner.

Standard Features/Equipment:

- 19 CFM Hydro-vane compressor
- Electric Refrigerated Air drier
- Easy to use Air Distribution Box regulates air to transfer pumps and spray gun
- Integrated four-way fork pockets
- Integrated breathable hose wrap
- Integrated hose hanger for up to 410' of heated hose
- Manifold Circulation Kit

Optional Equipment:

- Choose from any Graco R2 Reactor or PMC Proportioner (electric or hydraulic)
- 60 to 410 ft of heated hose
- Heated Hose Circulation Kit
- Breathable air systems (Bullard, Martech)
- Respiratory Alarm Shutoff (with breathing system)
- Single or dual power cord options (1-PH or 3-PH)



E-20 Mobile Cart

Easy Hook-up Under 50 amps



Portable Low Power Package Ideal for Mobile Jobs

Ideal for commercial work or remote areas. Small maneuverable cart with poly 8-inch wheels that can easily navigate through hallways and jobsites. Single air hookup and electrical connection make it easy to start up. Requires only 240 V, 1-PH, 50 Amps of power and 12 cfm of compressed air. Four-way fork pockets and optional D-hooks make it easy to transport.

Standard Features/Equipment:

- Two storage compartments
- 3-Stage Dessicant Air Dryer
- Integrated air regulators
- Integrated four-way fork pockets
- Integrated breathable hose wrap

Optional Equipment:

- Choose from Graco E-20/E-30/E-XP1/E-XP2 along with PMC PH2/PH25 and Titan FR28.
- 60 to 310 ft of heated hose
- Material supply pumps
- Manifold and heated hose circulation kits
- Breatheable air systems



TITAN HELIX LP SYSTEM

Cut the Cost of FrothPak's By Up To 50%



Designed to work with the Dow FrothPak Ultra Formulation

The Helix LP is the most advanced low pressure foam proportioner and delivery system on the market today. It is the first proportioner specifically matched to a low pressure formulation delivering a higher yield and increased productivity with the unmatched safety that a low pressure system can offer. The Helix LP uses Dow's patented FrothPak gun and nozzle simplifying operation and maintenance. Gain re-entry to work zone in 1 HR (with 10 air exchanges) simplifying scheduling with other trades and property owners.

Standard Features/Equipment:

- Optimized to work with Dow ULTRA formulation
- Low-tech, low-cost Dow ULTRA dispensing spray gun
- Small footprint
- SureFire active heated hose
- Pressure control manages heat and pressure to adhere to low pressure directive
- SmartConnect-Pressure and flow metering system
- Adjustable flow 2.5 to 12 lbs. per minute
- Unique pressure monitoring system provides constant low pressure accuracy
- Adjustable pressure from 40 to 100 PSI
- Active Heating System increases material heat up 50



Optional Equipment:

- 100,150, and 200 foot hose lengths
- Round and flat pattern nozzles
- Nitrogen pressure tanks or 55 gallon drums
- Drum pump kit available
- Truck mount system with integrated hose wrap and regulator
- Cart system with integrated hose wrap and regulator

For more information head over to www.cjspray.com/helixlp

CJ Mobile Rigs have many options and accessories so you can tailor the rig to your exact needs. These items can help you do your job faster, safer and more efficiently.

Manifold Circulation Kit - Reduce material waste and keep your trailer cleaner with this kit. Includes hoses, drum return tubes and desiccant driers.

Heated Hose Circulation Kit - Allows for easy circulation of material through entire system to prevent isocyanate crystallization during periods of down time. Reduces time required to warm the heated hose with coatings or ½ lb foam.

3 Stage Desiccant Dryer - Combo unit consisting of moisture trap, coalescer and desiccant bead filter removes moisture from compressed air with a low up front cost.

Electric Refrigerated Air Dryer - Recommended upgrade from three stage dryer, ensuring dry air without consumable desiccant beads.

Allegro Fresh Air Compressor System - Cost effective fresh air supply pump is portable and 110 volt.

Martech/Bullard Fresh Air Supply System - Mounts in trailer and converts air from spray rig compressor to Grade D breathable air.

Electric Heaters - 110 Volt and 240 volt options. 240 Volt has more BTUs, but only runs with the generator. 110 Volt model runs on generator and shore power but has less BTUs.

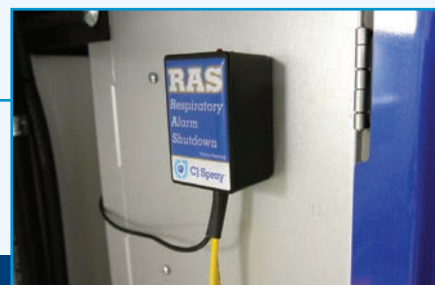
AirTronic Heater - The ultimate heating option. Runs on 12 volt DC power and diesel fuel. Set thermostat on the wall and the AirTronic Heater will maintain temperature burning only 1 gallon of diesel per 16 hours.

Drum Mixer - CJ Mobile Rigs are designed to easily add pneumatic drum agitators for a wide range of materials.

Drum Band Heaters with Thermostat - Warm drums faster with band heaters. CJ Mobile Rigs come with outlets and power available to add drum heaters at any time.

RAS (Respiratory Alarm Shutoff) - The system will generate an error code on both the standard reactor and the R2 style reactors.

Air Conditioner - Good addition for foam contractors in hot climates.



Questions? Need advice? Call CJ Spray toll-free today! 1-888-CJSPRAY



Spray Foam Rigs at a Glance



	16 ft.	20 ft.	28 ft.	Box Truck	AiMS
GVWR / Hitch	9,950 lb. Tag-A-Long	14,000 lb. Tag-A-Long	16,000 lb. Gooseneck	N/A	9,950 lb.
Generator	17.5/18 kW Gas 20 kW Diesel	20 kW Diesel 40 kW Diesel	20 kW Diesel 40 kW Diesel	20 kW Diesel 40 kW Diesel	22 kW Diesel
Compressor	5 HP Gas Vertical 3.5 HP Electric	5 HP Electric Vertical 7.5 HP Electric Vertical Screw/Generator Mount	5 HP Electric Horizontal 7.5 HP Electric Horizontal Screw/Generator Mount	5 HP Electric Vertical 7.5 HP Electric Vertical Screw/Generator Mount	Rotary Valve Air Compressor
Trailer Size	16' Flat	20' Flat	28' Flat	N/A	11'
Shore Power	110V / 230 V	110V	110V	110V	110V
Material Storage	Two Sets	Two Sets	Three Sets	Two / Three Sets	Two Sets
Transfer Pumps	Graco T1	Graco T1 / T2	Graco T1 / T2	Graco T1 / T2	Graco T1 / T2
Door Style	Ramp	Barn Door	Barn Door	Barn Door / Roll-Up	Gull Wing

Before Buying a Spray Foam Rig: A Checklist of Important Questions

	CJ Spray	Competition
Does the trailer have properly rated axle support for the load?	<input checked="" type="checkbox"/>	<input type="checkbox"/>
Is the spray rig configured and built by a company that is an authorized distributor for each manufacturer of the equipment used?	<input checked="" type="checkbox"/>	<input type="checkbox"/>
Is the spray rig insulated? If so was it spray foamed?	<input checked="" type="checkbox"/>	<input type="checkbox"/>
Has the installation of the components been approved by the respective manufacturers so that it does not void the warranty?	<input checked="" type="checkbox"/>	<input type="checkbox"/>
Does the door have a closeable hose hatch?	<input checked="" type="checkbox"/>	<input type="checkbox"/>
Has the trailer been weight certified to pull well down the road?	<input checked="" type="checkbox"/>	<input type="checkbox"/>
Does the rig appear professional and well designed?	<input checked="" type="checkbox"/>	<input type="checkbox"/>
Does the manufacturer train, service, and support the equipment after the sale?	<input checked="" type="checkbox"/>	<input type="checkbox"/>



Learn More About the CJ Spray Difference



CJ Spray features a first-class 40,000 sq. ft. facility to better serve our customers, featuring:

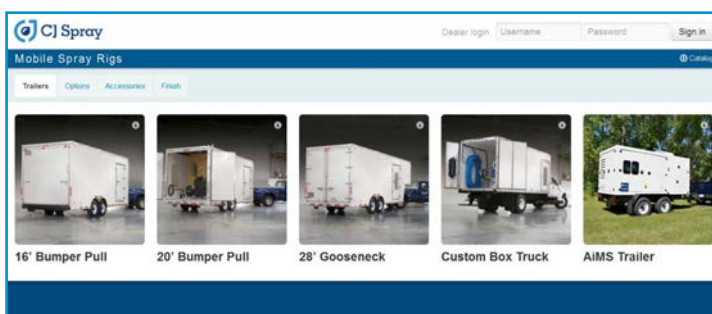
- Diverse product lineup beyond spray foam including roof coatings, waterproofing, protective coatings, polyurea, intumescent and more!
- Showroom & Training Room
- State-of-the-art Spray Lab
- Will-call area for parts and service with sheltered pickup truck height dock





Build your own rig at
www.cjspray.com/buildmyrig

- ✓ Customize your trailer
- ✓ Research components
- ✓ Find all the accessories you need
- ✓ Get instant pricing
- ✓ Save and print your results



CJ Spray
2845 Service Rd West,
Eagan, MN 55121

Toll-free 1-888-CJSPRAY (1-888-257-7729)
customerservice@cjspray.com

www.cjspray.com

CJ Spray Proudly Partners with:



**POLYURETHANE
MACHINERY
CORPORATION**

