



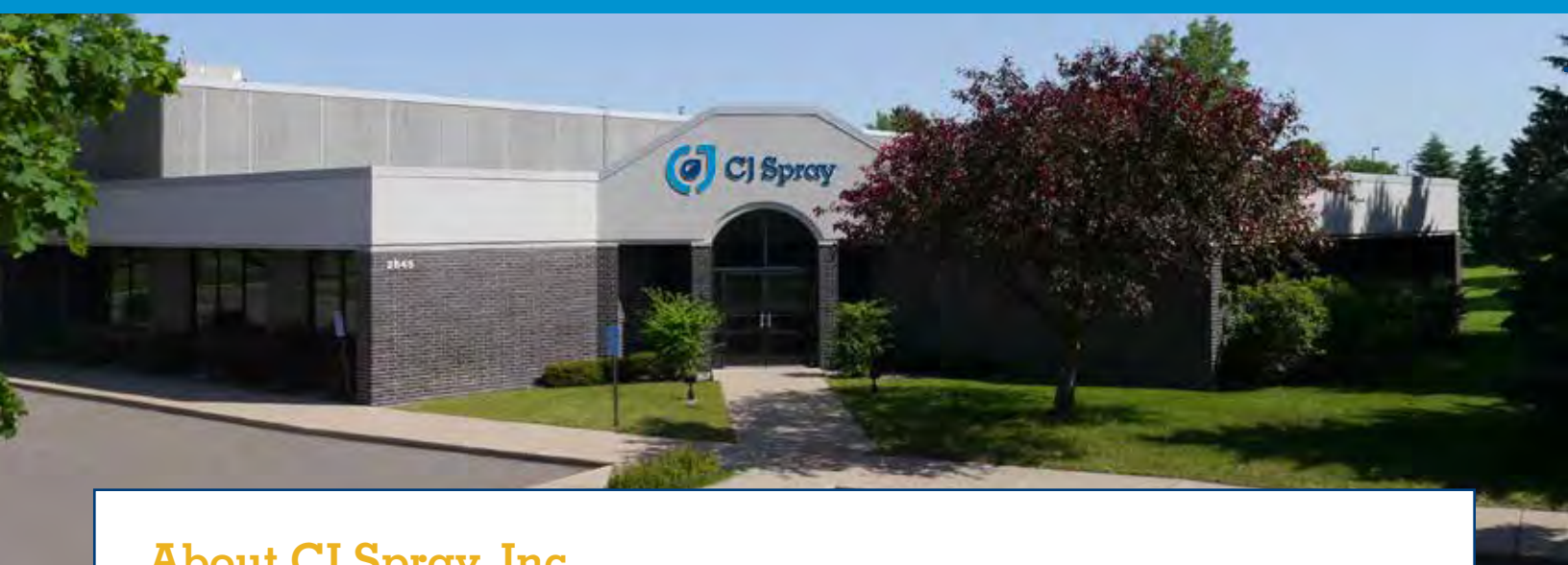
## Pumping Solutions

Equipment to spray or dispense all your liquid materials

- Fireproofing
- Stucco
- Cement
- Plaster
- Texture or Taping Mud
- Underlayment
- Waterproofing
- Grout



SALES • PARTS • SERVICE



## About CJ Spray, Inc.

In 1995, CJ Spray started as a distributor/wholesaler of equipment to spray, meter, mix and dispense liquids servicing consumer, contractor and industrial markets.

We offer cost effective off-the-shelf solutions or can design custom systems specific for your needs. After the sale we are here for training, service and a huge parts inventory with same day shipping or delivery. For more information please visit [www.cjspray.com](http://www.cjspray.com).

## Markets Served



### Infrastructure

- Protective Coatings
- Mortar Repair
- Concrete Pumps
- Grout Injection



### Architectural Coatings

- Spray Foam
- Waterproofing
- Air Barrier
- Roof Coatings



### Roadways/Marking

- Bridge Coatings
- Pavement Marking
- Scarifying



### Architectural Painting

- Residential Painting
- Industrial Painting
- Consumer DIY



### Texture

- Drywall Mud
- FRP Manufacturing
- Acoustic Coatings
- Aggregated Products
- Fibrated Products
- Fireproofing



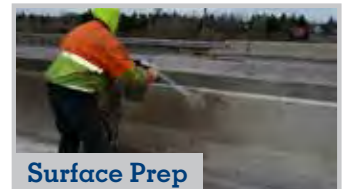
### Sealant & Adhesive

- OEM Manufacturing
- Crack Filling
- Seam Sealing
- FRP
- RIM



### Fine Finish Applications

- Porcelain Refinishing
- OEM Manufacturing
- Automotive
- Aviation
- Wood Finishing



### Surface Prep

- Abrasive Blasting
- Pressure Washing
- Sanding
- Tumble Cleaning

<b>3-4</b>	CJ Spray Hose System
<b>5-6</b>	Pump Chart
<b>7-8</b>	Pumps: Low Flow / Small Jobs
<b>9-10</b>	Pumps: Medium Flow
<b>11-12</b>	Pumps: High Flow
<b>13-14</b>	Mixers & Dust Control
<b>15-16</b>	Paddle Mixers
<b>17-18</b>	Quick Fill
<b>19-20</b>	Water Booster System
<b>21-22</b>	Spray Nozzles & Pole Guns
<b>23-24</b>	Nozzle Accessories
<b>25</b>	Graco Nozzles & Guns
<b>26</b>	On/Off Remote Cords & Extensions for Pumps
<b>27</b>	Material Hose Accessories
<b>28</b>	Hose Halters
<b>29</b>	CJ Spray Stucco / Fireproofing / Grout Hose
<b>30-31</b>	Material Hose Fittings & Couplers
<b>32</b>	Low Pressure Camlocks
<b>33</b>	Victaulic Hose Couplers
<b>34</b>	Extension & Power Cords
<b>35</b>	Air Hose & Whip Checks
<b>36-37</b>	Air Hose Fittings
<b>38</b>	Water Hose & Fittings
<b>39</b>	Clamps
<b>40</b>	Drywall Texture Sprayers
<b>41</b>	Alum Injection Pump for Fireproofing
<b>42</b>	Small Job Alum Injection Pump
<b>43-44</b>	Alum Injection Accessories
<b>45-46</b>	Alum Injection Patch Nozzle for Fireproofing
<b>47-48</b>	CAFCO® Blaze Shield® Spray Accessories
<b>49-50</b>	Passive Fire Protection
<b>51</b>	Airless Sprayers
<b>52</b>	HVLP Airless
<b>53</b>	Spray Foam
<b>54</b>	Waterproofing & Air Barrier
<b>55</b>	Pressure Washers
<b>56</b>	Pressure Washer Fittings
<b>57-58</b>	Tarps, Debris Netting and String Reinforced Poly







1  
pg 17

**QuickFill:** Increase productivity, reduce labor costs and improve water/mix ratio accuracy with CJ Spray's quick fill system. Easily adjust water dosage at the integrated digital display panel to get optimal yield per bag.

2  
pg 13

**Mixers:** CJ Spray carries a wide variety of mixers including hand/drill, portable, paddle, tub, and continuous mixers. Increase productivity and product consistency by utilizing more advanced mixer and water supply technology.

3  
pg 19

**Water Booster:** Can transfer water long distances when water supply is remote from work site. Also commonly used to provide consistent water flow to Continuous Mixer and spray applications of Isolatek Blaze Shield®.

4  
pg 5

**Pumps:** CJ Spray stocks more pumps than any distributor in North America. Although we focus on many different pumping markets, one of our specialties is equipment to spray cementitious and mortar based products including piston, positive displacement, peristaltic and rotor-stator pumps.

5  
pg 41

**Alum Pumps (Fireproofing):** Injecting alum into cementitious fireproofing materials increases yields and/or enhances set characteristics. CJ Spray's innovative cart-mounted injection systems are designed from the ground up to be easy to operate and maintain.



6

pg 43

**Alum Injection (Fireproofing):** Designed for longer care-free operation and easy clean-out. Choose from our standard Inline Injector or our innovative Injector with Flow Control. For small jobs, check out our Alum Injection Patch Nozzle.

7

pg 30

**Material Hose:** CJ Spray hose is designed specifically for stucco, plaster, EIFS, fireproofing, grout and concrete materials. Internally expanded fittings ensure a smooth transition between hose wall and fitting, which prevents buildup. Premium grade hose remains flexible while outer shell has great abrasion resistance.

8

pg 31

**Material Hose Connections:** Enhance worker safety with NEW higher pressure rating camlocks (750 psi) than standard brass or aluminum. Made from extruded aluminum alloy and hard coat anodized for strength and durability. For smaller 1" and 3/4" ID hose use Hansen couplers for higher pressure rating and ease-of-use. Check out CJ Spray's new enclosed hose halter (page 28) for a safer, more trouble-free hose connection.

9




pg 35

**Whip Hose:** More flexible 3/4" and 1" whip hose for worker comfort.

10

pg 21

**Spray Nozzles:** CJ Spray offers many different spray nozzles including 1" Finish Nozzles, 1 1/4" Browning Nozzles and Alum Injection Patch Nozzles. We also offer many accessories including 45° Gun Nozzle Adaptor, Swivels and Extension Kits.

	RECOMMENDED APPLICATIONS	Fireproofing	Stucco	EIFS	Plaster	Floor Underlayment	Repair Mortars	Grout	Acoustical
	LOW FLOW/ SMALL JOBS								
	Western Mini Sprayer	•					•		
	ToughTek P20	•	•	•	•	•		•	•
	Graco F340e	•	•	•	•	•	•		
	Quikspray Carrousel	•	•	•	•	•	•	•	•
	MEDIUM FLOW								
	ToughTek P30/P30x	•	•	•	•	•	•	•	•
	ToughTek MP20	•	•	•	•	•	•	•	•
	Graco F680e	•		•	•	•	•		
	Graco M680	•		•	•	•	•		
	Putzmeister S5E	•	•	•	•	•	•	•	•
	Putzmeister S5GH	•	•	•	•	•	•	•	•
	HIGH FLOW								
	ToughTek P40	•	•	•	•	•	•	•	•
	ToughTek F800e	•				•			
	Western Predator D500 3.5 Gal	•	•		•				
	Western Predator V600 3.75 Gal	•							
	Western Predator E15 Electric	•							

	Wall Texture	Flow	Max Pressure	Max Length Hose	Pump Type	Power	Weight	Air Compressor	Hopper Capacity
		3 gpm	80 psi	30 ft	Rotor Stator	110V	195 lbs	10 CFM	22 Gal
	•	3.6 gpm	150 psi	50 ft +	Rotor Stator	115V/20A			
	•	6.5 gpm	600 psi	100 ft+/50 Vertical	Piston Pump	120V/15A	210 lbs	NA	20 Gal
	•	7.5 gpm		75 ft	Peristaltic Pump	110V/20A	300 lbs	Optional 10 CFM	18 gal
	•	10 gpm 200 bags/hr underlayment	425 psi	200 ft+/60 Vertical	Rotor Stator	220V/30A	425 lbs	NA	
	•	10 gpm 200 bags/hr underlayment	425 psi	200 ft+/60 Vertical	Rotor Stator	220V/50A	485 lbs	NA	60 gal
	•	10.8 gpm	500 psi	300 ft/200 Vertical	Piston Pump	230V/30A	625 lbs	10 CFM	30 gal
		10.8 gpm 20 bags/hr sfrm's	1000 psi	NA	Piston Pump SS	10:1 AIR	250 lbs	NA	10 gal
	•	12 gpm 21 bags/hr sfrm's	360 psi	260 ft/195 Vertical	Rotor Stator	230V/50A	800 lbs	10 CFM	
	•	12 gpm 21 bags/hr sfrm's	360 psi	260 ft/195 Vertical	Rotor Stator	18 HP GAS	750 lbs	10 CFM	
		18.7 gpm 300 bags/hr underlayment	600 psi	400 ft/150 Vertical	Rotor Stator	220V/ 3 PH / 30A	595 lbs	NA	
		26 gpm 40 bags/hr	600 psi	300 ft		240V 1PH / 30A			
		6.7yd3/hr 45 bags/hr sfrm's	1000 psi	Varied	Piston Pump	Diesel/ Electric	2300 lbs	14 CFM	12 cu ft
		9.6 yd3/hr 60 bags/hr sfrm's	1000 psi	Varied	Piston Pump	Diesel/ Electric	2400 lbs	14 CFM	12 cu ft
		6.7yd3/hr 45 bags/hr sfrm's	800 psi	Varied	Piston Pump	Electric	2100 lbs	14 CFM	12 cu ft

# LOW FLOW/ SMALL JOBS

Professional grade pumps designed for touch-up, patching and small jobs. These versatile machines are compact and portable. They serve many markets including fireproofing, stucco, texture and floor underlayment. Greatly increase productivity when compared to mixing and applying by hand.

## Western Mini Sprayer

**CJ Recommended**  
 **Repair Mortars**

The Mini Sprayer is a heavy-duty portable sprayer designed for smaller jobs or limited access areas where you require continuous pulse-free production.



- Fully sealed electric component box
- Stainless steel hopper and shroud
- Redesigned nearing cartridge with grease verifying return port to ensure long life and less down time.

**Specs:**

**Output:** 3 GPM    **Max Hose Length:** 30 ft    **Weight:** 195lbs  
**Electric Supply:** 110V, Single Phase    **Dimensions:** 30"H x 33"L x 18.5"W

## ToughTek P20

**CJ Recommended**  
 **Underlayment**

Rotor stator design similar to Kodiak M2 but with larger design for more output. Easily remove motor and controls for lightweight transportation. Can be used for many materials but excels in floor underlayments and EIFS basecoats.



- Variable pump output
- Easy to maintain with quality components
- Can be switched on and off by remote control (sold separately)
- Versatile application
- Suitable for site and user friendly
- Small size and light weight make it compact and easy to use

**Specs:**

**Output:** 7.3 GPM    **Main Motor:** 5 HP    **Pumping Distance:** 100ft  
**Pumping Height:** 20ft+    **Electric Supply:** 240V, 30A    **Dimensions:** 64"H x 24"L x 29"W



# Graco ToughTek F340e, S340e



Engineered with piston pump technology, ToughTek Fireproofing Pumps deliver high pressures to move fireproofing materials through long hose lengths. Graco's piston pump technology easily handles low, medium and high-density sprayed fire resistive materials (SFRMs), delivering them with a smooth, steady flow rate.

The ToughTek S340e is specifically designed for pumping aggregated materials such as Stucco and core filling.

Easily change between F340e and S340e with a simple conversion kit.

- Piston Pump Technology
  - Higher pressures for longer hose lengths up to 100ft+
  - Long lasting wear parts
  - Easy to disassemble and clean
  - Easily convert pumps between fireproofing and stucco
- Electric operation – plugs into a standard 120V, 15A wall outlet

## Specs:

**Pump Type:** 2-ball piston    **Max Working Pressure:** 600 psi

**Max Spray Pressure:** 500 psi    **Max Output:** Up to 15 bags/hr

**Weight:** 210 lb    **Max Hose Length:** 1" x 100 ft

**Hopper Capacity:** 20 gal    **Dimensions:** 45.5L x 24W x 38H

**Chemical Compatibility:** Water Based Materials



Upgrade Kit  
Part #25E407

# Quikspray Carrousel



Proven peristaltic pump design is simple to use and maintain. Straight forward design puts no moving parts in contact with fluid, making it ideal for abrasive or fast setting materials.

- Dependable
- Fast cleanup
- Maneuverable
- Variable speed
- Simple operation
- Low maintenance
- Optional on-board air compressor

Pumpline 1.25" QS26625  
1.25" QS26630

## Specs:

**Motor:** 115V/60 Hz electric (1HP) or pneumatic (2HP)

**Motor Speed:** Variable, 0-100%

**Weight:** Approx. 300lb    **Dimensions:** 48" x 31" x 23" w/o Hopper    53" x 35" x 36" w/ Hopper

**Air Compressor:** Minimum 9.92 cfm for electric, 100 cfm for air pneumatic pump required

**Note:** System requires external mixer and air compressor. Electric also requires power supply.

# MEDIUM FLOW

Medium output pumps are ideal for the contractor doing small to medium sized commercial work. Great balance of portability and production speed. They serve many markets including Fireproofing, Stucco, Texture and Floor Underlayment. Production rates are too fast for hand-mixing.

## ToughTek P30/P30X



Rotor-stator pump design is ideal for commercial floor underlayment applications. Also works well with Fireproofing, Stucco, Drywall Texture and Mortar materials. Modular design allows for quick and easy disassembly for lightweight loading and unloading.

P25x has a larger capacity hopper for use with batch mixers. On-board electric controls can also simplify movement around the job site.



- Variable pump output
- Easy to maintain with quality components
- Can be switched on and off by remote control
- Versatile application
- Suitable for site and user friendly
- Small size and light weight make it compact and easy to use

**Specs:**

**Output:** 0-80 CuFt/Hr    **Main Motor:** 5.25 hp    **Pumping Distance:** 100ft+  
**Pumping Height:** 60ft+    **Electric Supply:** 220V, 60Hz, 30A\*    **Dimensions:** 63" x 25" x 24"  
*\*Units are available in 220V Single*

## ToughTek MP20/MP40



Combine the output of the P25 with the production of a continuous mixer. This all-in-one machine quickly mixes and dispenses bagged floor underlayment.

- Saves labor costs
- Less material waste and improved quality
- Fast, easy cleaning
- Compact and portable

## Graco M680 Mortar Pump



Hand troweling cementitious materials is time-consuming. Save time, speed up the process and increase your profits by using a ToughTek M680a Mortar Pump to spray and finish-trowel the material instead of using the traditional hawk and trowel method.

- Saves labor costs
- Less material waste and improved quality
- Fast, easy cleaning
- Air-operated motor is ideal for hazardous environments
- Ideal for coating contractors
- Compact and portable

**Specs:**

**Pressure Ratio:** 10:1 Fluid to air    **Max Air Operating Pressure:** 100 psi  
**Air Inlet Size:** 3/4" npt(f)    **Dry weight:** 250 lb w/ 35ft hose & applicator  
**Fluid Inlet Size:** 2 in cam groove male    **Fluid Outlet Size:** 1 in npt(f)

# Graco ToughTek F680e

**CJ Recommended**  
Fireproofing



Turn to page 11 for more information on the Graco F800e

Engineered with piston pump technology, ToughTek Fireproofing Pumps deliver high pressures to move fireproofing materials through long hose lengths. Graco's piston pump technology easily handles low, medium and high-density sprayed fire resistive materials (SFRMs), delivering them with a smooth, steady flow rate.

The ToughTek F680e has a small footprint and is easy to maneuver. With 300 feet of hose, you'll spend more time spraying and less time moving your equipment around the job site. Grab the power of ToughTek and get your fireproofing projects done faster and more efficiently.

- Piston pump technology easily handles gypsum-based and cementitious SFRMs
- Gets projects done faster with high-pressure performance
- Electric operation – 230V single phase power, 30 amps
- Long lasting wear parts for more uptime, less downtime
- Easy to use, simple to maintain
- Ideal for fireproofing over structural steel or spray foam insulation
- Pivoting pump lower for easy maintenance

## Specs:

**Pump Type:** 2-ball Piston **Max Working Pressure:** 500 psi **Max Spray Pressure:** 500 psi  
**Max Output:** Up to 20 bags/hr **Max Hose Length:** 300ft **Hopper Capacity:** 30 gal **Weight:** 625 lb  
**Dimensions:** 62.25L x 33W x 46inH **Chemical Compatibility:** Water based materials

# Putzmeister S5 EV/ S5 GH

**CJ Recommended**  
Fireproofing & Stucco



The S5 is the smallest pump in the iconic Putzmeister line. This versatile rotor-stator pump has huge output in a compact portable design. Ideally suited for the commercial contractor applying fireproofing, plaster, stucco, swimming pool finish, pressure grout and pipeline refurbishment.

Available in electric or gas-driven models.

- VFD controlled gear motor drive
- Control panel designed to UL standards
- Optional integrated air compressor
- Optional T100 integrated mixer (shown)
- Gas model includes 10cfm air compressor

## Specs:

**Max Volume Output:** 1.5ft³ - 44lpm - 21 bags/hr **Horizontal Pumping Distance:** 260'  
**Vertical Pumping Distance:** 195' **Max Pressure:** 360 psi **Hopper Height:** 30" **Weight:** 800lbs  
**Outlet Diameter:** 2" **Pump Size:** 2L88 or 2L6 **Power:** 208/230V **Dimensions:** 95.5"L x 28.5"W x 31"H  
**Power:** 208/230V - 18 hp Gas **Air Compressor:** 10 cfm **Dimensions:** 107"L x 28.5"W x 35"H

# ToughTek P30HT

**CJ Recommended**  
Fireproofing & Stucco



The P30HT is the same compact size of the P20 rotor stator pump, and has more horsepower. Designed to use epoxy-based mortars and other thick high-viscosity materials. If you plan to spray taller buildings, such as sport stadiums, high-rises, apartment complexes, hospitals and parking garages - the P30HT is perfect for your needs.

## Specs: #25M032

**Output:** 9.8 GPM 300 psi **Pumping Distance:** 150ft **Power:** 240V, 30A, 1ph Electric



# HIGH FLOW

Large commercial work requires high volume and long pumping distances. This line of pumps are ideal for high rises, hospitals and other large commercial work. They serve many markets such as Fireproofing and Stucco. Some models have an optional integrated mixer.

## ToughTek P40

**CJ Recommended**

**Floor Underlayment**

The ultimate big job floor underlayment machine. Large rotor-stator design pushes a high volume of material long distances. Can pump up to an incredible 300 bags of underlayment per hour. Maximize productivity by pairing with D35 Silo/Continuous mixer and working from super sacks.



- 220 Volt, 30 Amp three-phase power
- 15 Hp variable speed
- Main drive motor
- 11 Kw variable frequency drive
- U356 progressive cavity (rotor/stator)
- 600 PSI pumping pressure
- Low hopper fill height
- Reversible and variable speed output
- Quick disassembly for easy clean up and transport

**Specs:**

**Output:** Up to 150 CuFt/Hr **Main Motor:** 15 hp **Pumping Distance:** 400ft+ **Pumping Height:** 150ft+  
**Electric Supply:** 220V, 3 Phase, 30A **Dimensions:** 30"H x 84"L x 29"W **Weight:** 595 lbs

## ToughTek F800e

**CJ Recommended**

**Floor Underlayment**

Designed with Graco's patent-pending piston pump technology and an efficient direct drive motor, the ToughTek F800e sprays up to 40 bags an hour while plugged into any standard 240V, 30A outlet. With longer life from piston pump seals (compared to rotor stator pumps) and a tool-less disassembly, keep your operation moving with increased production and less downtime. Maneuver around jobsites with ease



Weighing only 385 lbs, this mid-size pump has a smaller footprint than competitive pumps, making it easy to get on and off a service elevator, push through doorways or move around a jobsite.

**Specs:**

**Output:** 26 gpm, 40 bags /hr **Max Pressure:** 600 psi  
**Electric Supply:** 240V, 1 Phase, 30A **Max Hose Length:** 300 ft

## Putzmeister Tommy Gun Plaster

**CJ Recommended**

**Stucco**

This heavy duty machine from Putzmeister is ideal for high-pressure, long-distance plastering. Even under the most difficult conditions, the coarsest mixtures flow easily in a smooth, easy-to-control stream. The Tommy Gun A3 features a 2-inch outlet, four-speed variable drive and standard hopper screen for higher efficiency, along with a heavy-duty drive train and rocker arms. Its vertical cast steel pump manifold is as long as cast iron.

- 4 preset speeds
- Diesel engine w/ optional electric motor
- 9 ft<sup>3</sup> hopper capacity

**Specs:**

**Max Output Volume:** 45 bags/hr - 6.7 yd<sup>3</sup>/hr  
**Max Output Pressure:** 800 psi **Fuel Tank Capacity:** 7 gal  
**Air Compressor:** 10 cfm **Outlet Diameter:** 2"  
**Material Cylinder Diameter:** 3.50" **Material Cylinder Stroke:** 6"





# Putzmeister Tommy Gun Fireproofing



This high-volume, heavy-duty fireproofing machine from Putzmeister has a large 3.75-inch cylinder, long 8-inch stroke, and 3-inch outlet to deliver up to 60 bags an hour. Four-speed variable drive and adjustable two-position stroke provide the smoothest pumping. It has a heavy-duty drivetrain and rocker arms, and the vertical cast steel pump manifolds last twice as long as cast iron.



- Mechanical piston ball valve
- Heavy-duty trailer with torsion axle, electric brakes, fenders, and tail lights
- Detachable tow bar
- Galvanized material hopper
- Hard-chromed pump cylinders
- Zinc-plated main output pipe and bends
- Heavy-duty sealed gear reduction box and drivetrain, 2-15/16" output shaft
- Vertical cast steel pump manifold
- Manual pressure release safety valve

**\*DISCONTINUED\* PARTS AVAILABLE**

#### Specs:

**Max Output Volume:** 9.6 yd<sup>3</sup>/hr - 60 bags/hr **Max Output Pressure:** 1,000 psi

**Air Compressor:** 10 cfm **Output Control:** Four preset speeds

**Diesel Engine:** Hatz 2M41Z - 34 hp

**Fuel Tank Capacity:** 7 gal

**Material Cylinder Diameter:** 3.75"

**Material Cylinder Stroke:** 8"

**Hopper Capacity:** 9 ft<sup>3</sup>

# Western Predator



The best quality pump now available with brakes and suspension. The picture featured is of our Predator V600 Pump, which comes equipped with the powerdump feature.

- **Manifold** - High volume cast steel manifold assembly with 2 or 3 inch outlet.
- **Heavy Duty Fenders** - Specifically designed with the contractor in mind and fabricated out of 10 Gauge steel for enhanced durability.
- **Fender Line** - Custom fitted heavy duty liners protect brake drums and wheels from materials being pumped.
- **Tandem Axle** - Two 8,000 lbs rated axles with torsion suspension provides you with a safer and smooth ride.

#### Specs:

**Pump Design:** Reciprocating Piston

**Pump Power:** Perkins Tier IV

**Maximum Aggregate Size:** 1/8 inch Minus

**Pumping Rate \*:** 9.6 yd<sup>3</sup>/hr (60bags/hr)

**Maximum Pressure:** 1000 psi (69 bar)

**Pumping Cylinder:** 3.75", 3.5"(standard), 2.75"

**Compressor:** Quincy PLS 2 cylinder rated at 14 CFM

**Fuel Tank:** 6.25 Gallons **Hopper Capacity:** 12 cu.ft.

**Material Outlet:** 2" NPT (standard), 3" NPT

**Weight:** 5200 (Diesel) **Water Tank:** 35 Gal



# MIXERS

Applying properly mixed materials are key to any successful job. Mixing materials is also one of the major labor costs of any job. Ensure properly mixed material and reduce labor costs by utilizing a continuous mixer. Pair with Water Booster (page 19) to provide consistent water flow. Available in different outputs, size according to your pumping equipment's flow rates.

MIXER LAYOUT	MODEL	CAPACITY	POWER
Continuous Mixers			
Putzmeister	CM 928	17.7 gpm 33bags/hr sfrm's	208/230V, 30/17A, 1/3PH
ToughTek	MP20	10 gpm 140bags/hr self-leveling underlayment	230V, 30A, 1/3PH
ToughTek	MP40	21 gpm 300 bags/hr self-leveling underlayment	230V, 30A, 1/3PH
Paddle Mixers			
Toro Mortar mixers	MM-12511H-S	12 cu/ft per/batch	Honda GX340
	MM-858H-S	8 cu/ft per/batch	Honda GX240
	MM-850E-S	8 cu/ft per/batch	1.5-2 hp elec 115/230V
	MM-658H-S	6 cu/ft per/batch	Honda GX240
	MM-650E-S	6 cu/ft per/batch	1.5 hp elec 115/230 V
Western Mixer	1200	Gas or diesel 12 cu/ft per/batch Hydraulic Drive	Kohler CS Pro 15HP Gas Lombardini 10HP Diesel Hatz 1D41 7.6HP Diesel
Tub/Barrel Mixers			
Putzmeister	TM-100	5.5 cu/ft per/batch	208/230V, 18/10A
Collomix	TMS 2000	20 gal/batch	110V
Collomix	LevMix 65 Mobile Mixer	15 gal / 3 bags plus	1600 watts / 2.15 hp / 14.5 amps
Hand Mixers			
Collomix	Xo-55	twin paddle bucket mixer	110V
Collomix	Xo-6	single paddle bucket mixer	110V
Collomix	Xo-1	single paddle bucket mixer	110V

## Hydra-Flow Mixers



On a Truck, Trailer, Wheels or Skid, Hydra Mortar Mixers & Plaster Mixers are Built to Last Regardless of how you configure your plaster mixer or mortar mixer, there are lots of reasons to choose Hydra-Flow. Mortar mixers and plaster mixers are available in 8, 10, 13 and 16 cubic foot capacities and with 14HP Honda engines.

# CONTINUOUS MIXERS

## Dust Collection System for Mixing Bagged Materials



Comply with OSHA's new silica rule - protect workers and other trades from harmful airborne particles.

### DC-110 Dust Collection System includes:

- 110V (15 amps) Operation
- HEPA Filter
- Built-in Filter Cleaner Bar
- Rugged, Light Weight Contractor frame
- Custom Hoods Available



### Graco MP20/MP40 T10420-02

- DC-110 Dust Collector (S10420-10)
- 10 ft section hose (V10420-08)
- Hood designed for Graco MP20 or MP40 (S10420-02)



### Graco CM20 T10420-01

- DC-110 Dust Collector (S10420-10)
- 10 ft section hose (V10420-08)
- Hood designed for Graco CM20 (S10420-01)

## ToughTek MP20/MP40

Mixes all types of pre-blended mortar products such as EIFS, plaster, stucco, self-leveling underlayments, refractory materials, masonry, and grout. Mixes the product in any amount, any consistency. A low pressure cutoff and water pump come standard along with two-wheeled frame.

### ToughTek MP20 Specs:

**Output:** 7.3 gpm, 100 bags/hr **Motor:** 5.25 Hp

**Water Required:** 32 PSI @ flow rate

100' hose length

**Electric Supply:** 230V, 60 Hz, 30A\*

**Dimensions:** 74" x 30" x 47"

\*Units are available in 230V Single

### ToughTek MP40 Specs:

**Output:** 13 gpm, 200 bags/hr **Motor:** 7.5 Hp

**Water Required:** 32 PSI @ flow rate

150' hose length

**Electric Supply:** 230V, 3 ph, 25A\*

**Dimensions:** 74" x 30" x 47"

\*Units are available in 230V Single



## ToughTek CM 20 / CM 40

High output mixer handles all types of pre-blended mortar products including self-leveling underlayments and toppings, concrete repair mortars, masonry mortars and grouts. A low pressure cutoff and water pump come standard along with two-wheeled frame.

- Excellent mix quality
- Long service life
- Modular construction
- Self-Cleaning
- No special tools required to assemble
- Easy set up and breakdown



### CJ Recommended



**Floor  
Underlayment  
& Stucco**

### CM 40 Specs:

**Operating Voltage:** 220V Single or 3 ph available **Feed capacity:** 300 bags/hr, 18 gpm

**Nominal Power:** 5.4 HP (4kw) Standard, Fusing 220 V @ 30 AMP

**Dimensions:** L x W x H 6.75"x36"x45", Filling height: 45", Total weight: APPROX. 441 LBS

### CM 20 Specs:

**Operating Voltage:** 120 V, 15A / 230V, 10A

**Feed capacity:** 40 bags/hr, 6.5gpm

# PADDLE MIXERS

Paddle mixers are an economical way to increase production and reduce labor costs. The versatile design is time-tested and works well with a wide variety of products including fireproofing, stucco, plaster and mortars. Pair with Quick Fill System (page 17) to reduce labor cost and ensure consistent mix.

## Toro Mortar Mixers (Stone)

### Fast Mixing Performance & Long-Lasting Quality

Toro mortar mixers are built for light, medium, and heavy-duty jobs with durable construction, an easy-to-clean design, and simple maintenance. These quality mixers are available in 6, 8, 11 and 12 cubic foot drum sizes and are built for superior mixing performance. Patented features, like quadruple bearings and seals which feature a lifetime warranty, ensure your mixer runs trouble-free for years. Toro's mortar mixers also offer a design built for easy operation with a drum latch that can be operated with a knee while the operator's hands are busy dumping. A patented guard lifter automatically moves the guard out of the way as the mix is discharged. Toro's mortar mixer line up offers long lasting value for any mixing job.



### Toro's MMX Buddy Mixer

Toro's MMX mixer features a unique patented paddle and drum design for the best speed and mixing consistency on the market - perfect for busy concrete & masonry contractors.

	MM-650E-S	MMX-655-H-S	MM-658H-S	MM-850E-S	MM-858H-S	MM-12511H-S
<b>Part No.</b>	60212	GX-160	60216	60218	68021	68024
<b>Batch Capacity Bags</b>	1.5 - 2	1.5 - 2	1.5 - 2	2.5 - 3	2.5 - 3	3-4
<b>Batch Capacity Volume</b>	6 cu ft.	6 cu ft.	6 cu ft.	8 cu ft.	8 cu ft.	12 cu ft.
<b>Total Drum Volume</b>	6.9 cu ft.	6.9 cu ft.	6.9 cu ft.	9.0 cu ft.	9.0 cu ft.	14.8 cu ft.
<b>Engine</b>	1.5 HP Electric 115V-230V	Honda GX or Honda GX240	Honda GX or Honda GX240	1.5 HP Electric 115V-230V or 2 HP Elec	Honda GX240	Honda GX340
<b>Drum Options</b>	Steel	Steel or Plastic	Steel or Plastic	Steel	Steel or Plastic	Steel
<b>Drive &amp; Clutch</b>	Belt Drive Front post hand clutch	Belt Drive Front post hand clutch	Belt Drive Front post hand clutch	Belt Drive Front post hand clutch	Belt Drive Front post hand clutch	Totally enclosed gear drive & clutch
<b>Wheels, Bearings &amp; Axle</b>	4.80 x 12 (20" Diameter) High Speed Tires, Tapered Roller Bearings, 46" Axle - Extendable, Safety Chain				B78 x13 (25" diameter) High-Speed Tires, Tapered Roller Bearings, 46" Axle - Extendable, Safety Chain	
<b>Dimensions</b>	64"x34"x54"	64"x34"x54"	64"x34"x54"	76"x34"x54"	86"x34"x54"	81"x50"x54"
<b>Weight</b>	550 lbs	530-550 lbs	530-550 lbs	605 lbs	585-605 lbs	1120 lbs
<b>Accessories</b>	Choice of tow pole hitch options: forged, pintle or stamped & trailer light kit					



## Putzmeister TM-100

The compact, versatile TM 100 mixer from Putzmeister features a paddle-type mixing blade with rubber wipers and reversing capabilities for highly efficient mixing. It is ideal for plaster, stucco, grouts, and fireproofing materials. Plus, you can easily bolt it to the S5 EV for quick, convenient use.



- Mount on optional stand
- Mount on an S5EV
- Recently improved mixing design

## Collomix TMS 2000



The portable mortar mixer ColloMatic® TMS 2000 is suitable for up to 20 gal of mixing material. Ruggedly constructed, this compact mixer can cope well with construction site conditions. The automatic mixer TMS 2000 is particularly suitable for processing dry and highly-viscous materials such as numerous types of mortar, plaster, screed and concrete. Its main attributes are speed, mobility and reliability – so it saves time, energy and money.

- CJ Spray modified mixing paddles
- Built-in step for easy access
- Built-in pail stand
- Works well for repair mortars when combined with Graco M680

## Collomix LevMix 65 Mobile Mixer



Blending of leveling compounds is fast and easy with the new Collomix LevMix 65 mobile mixer. The LevMix 65 unites three steps in one operation: mixing, transporting and pouring. Save time and mix up to three bags plus of mixing material at once.

- One man operation: mixing, transporting, pouring in one process step
- To pour the material accurately on the floor
- Consistently superb and reproducible mixing results
- Mixes three bags plus at once

## Collomix Xo-55



Heavy work – made lighter. The counter-rotating hand-held mixer Xo 55 duo makes lots of mixing jobs easier and quicker. There is no counter-torque on the user and the machine is easy to move even in heavy and viscous material. You can generally count on being finished in just half the time. That's modern mixing!

- Quick, easy and thorough
- Upright working position
- Universal and economical

## Collomix Xo-1, Xo-4, Xo-6



Optimum performance and perfect ergonomics. That's what the new Xo hand-held mixers are. Easy to operate with a straight back and ergonomically shaped grip handles. State-of-the-art motor and gear unit components for long service and safety while working. For your safety every Xo hand-held mixer is equipped with a Double Action Trigger (with safety lock-off to prevent unintentional machine start-up).

# QUICK FILL

Increase productivity, reduce labor costs and improve water/mix ratio accuracy with CJ Spray's quick fill system. Easily adjust water dosage at the integrated digital display panel to get optimal yield per bag.

## Typical Applications:

- Fireproofing
- Stucco/Plaster
- Mortar
- Concrete & Masonry
- Grout
- Floor Underlayment



### Overfill Protection

Secondary safety sensor prevents tank from overfilling

### Digital Display Timer

Easily adjust timed water flow with up/down arrow

### Single Surface Mount Power Input

Single power input reduces clutter of multiple power cords and provides single connection point that is high and dry off the floor

### Magnetic Reed Float Switches

Quick fill system utilizes three durable and protected float switches

### Easy Drain

Quickly and easily drain for winter transport

### Inlet Water T-filter

Prevents contaminants and debris from entering system

### Low Water Shutdown Feature

Prevents damage to pump by shutting down before running dry

### Remote Control Pendant

Start, stop, jog and reset quick fill system from mixer station. Detachable cord for easy windup and storage





#### External Frame Mounted Pump

Improve worker safety by keeping pump and electrical cords out of water tank

#### Robust Steel Frame

Portable four wheel frame moves easily on rugged job sites

#### Specifications

**Weight:** 250 lb dry

**Dimensions:** 30"W x 35.5"L x 55"H

**Flow Rate:** 35 gallons/minute

**Power:** 110 Volt, 15 amp

**Tank Capacity:** 55 gallons

**Caster Wheels:** 8" Rubber caster (2 swivel, 2 rigid)

#### Quick Fill System

Part No	Description
T10400-00	Complete Quick Fill System w/ 20' Fill Hose and Mixer Attachment
V10352-00	Replacement Pendant Assy
H10702-20	1.5" x 20' Replacement Hose
H10702-21	1.5" x 20' Hose w/ Aluminum Female Camlocks
S10405-00	Inline Water Meter Kit (gallons used/gallons per minute)
S10415-00	Quick Fill Dispense Port, U-Shaped
S10416-00	Quick Fill Dispense Bar
T10401-00	Quick Fill Replacement Timer

# WATER BOOSTER SYSTEM

## Common Uses:

1. Provide consistent water flow to continuous mixers
2. Spray applications of CAFCO® Blaze Shield®.
3. Transferring water when water pressure is low or source is located a long distance from usage area.

## Typical Applications:

- Fireproofing
- Stucco/Plaster
- Mortar
- Concrete & Masonry
- Grout
- Floor Underlayment



**4-Wheel cart is easy to transport featuring low water shutdown which prevents pump from running dry**

## Safety Recirculation System

Prevents pump from overheating

## Complete Water Booster System

Comes assembled and ready to use, does not include outlet water hose

Part No	Description
T10300-00	Complete Water Booster System

## Specifications

**Weight:** 250 lb dry

**Dimensions:** 30"W x 35.5"L x 55"H

**Flow Rate:** 6 gallons/minute

**Power:** 110 Volt, 15 amp

**Tank Capacity:** 55 gallons

**Caster Wheels:** 8" Rubber caster (2 swivel, 2 rigid)





#### Overfill Protection

Secondary safety sensor prevents tank from overfilling

#### Magnetic Reed Float Switches

Quick fill system utilizes three durable and protected float switches

#### Single Surface Mount Power Input

Single power input reduces clutter of multiple power cords and provides single connection point that is high and dry off the floor

#### Easy Drain

Quickly and easily drain for winter transport

#### Inlet Water T-filter

Prevents contaminants and debris from entering system

#### Low Water Shutdown Feature

Prevents damage to pump by shutting down before running dry

#### Robust Steel Frame

Portable four wheel frame moves easily on rugged job sites

### Premium Contractor Grade Sureline Water Hose

Male x Female brass garden hose threads. 150 psi working pressure.

Part No	Hose Diameter	Length
H10712-25	3/8"	25'
H10715-50	3/4"	50'
H10715-1X	3/4"	100'



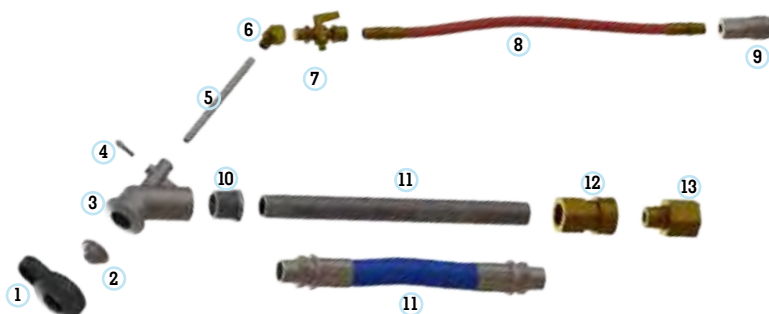
# SPRAY NOZZLES & POLE GUNS

## 3/4" Lightweight Finish Nozzle Complete

Spray nozzles can be used with Fireproofing, Stucco, Plaster, EIFS and Drywall Texture designed for maximum weight reduction. Hansen Coupler that acts as an all-in-one swivel and disconnect.

**1" Spray Nozzle x 3/4" Pipe** Includes nozzle, air stem, 1/2" orifice, 3/4" pipe, swivel and air hose.

Part No	Description
T12609-12	Finish Nozzle Complete, 1", 3/4 x 12
T12609-18	Finish Nozzle Complete, 1", 3/4 x 18
T12609-24	Finish Nozzle Complete, 1", 3/4 x 24
T12609-48	Finish Nozzle Complete, 1", 3/4 x 48
T12609-72	Finish Nozzle Complete, 1", 3/4 x 72
T12609-16	Flex Finish Nozzle Complete, 1", 3/4 x 16 Flexible Hose



## Replacement Parts - 1" Spray Nozzle x 3/4" Pipe

Ref No	Part No	Description
1	AT309094	Rubber Cap
2	AT910055	1/2" Standard Orifice
3	AT910001	Nozzle body, 1" Finish Nozzle
4	AT301845	Thumb Screw, 1/4-20 UNC X .50
5	AT910045	Air Stem, short, 5 1/8"
6	AT910047	Elbow, 45°, brass
7	AT306021 BV252LPMF	Ball Valve, 1/4", Male x Female (stock Putzmeister) Ball Valve, 1/4", Male x Female (CJ Spray option)
8	AT912454 H10402-00 H10402-10 H10402-20 H10402-30 H10402-40	1/4" x 12" Air Hose, 1/4" Male x Male NPT 1/4" x 18" Air Hose, 1/4" Male x Male NPT 1/4" x 24" Air Hose, 1/4" Male x Male NPT 1/4" x 36" Air Hose, 1/4" Male x Male NPT 1/4" x 48" Air Hose, 1/4" Male x Male NPT 1/4" x 72" Air Hose, 1/4" Male x Male NPT
9	12-1330	Female Air Quick Disconnect x Female NPT
10	V000101-00	Bushing, SST, 3/4" Female x 1" Male NPT
11	C12609-12 C12608-10 C12608-15 C12608-16 C12609-18 C12609-24 C12609-48 C12609-72	3/4" x 12" Aluminum Pipe, Male x Male NPT 3/4" x 10" Flex Hose, Male x Male NPT 3/4" x 15" Flex Hose, Male x Male NPT 3/4" x 16" Flex Hose, Male x Male NPT 3/4" x 18" Aluminum Pipe, Male x Male NPT 3/4" x 24" Aluminum Pipe, Male x Male NPT 3/4" x 48" Aluminum Pipe, Male x Male NPT 3/4" x 72" Aluminum Pipe, Male x Male NPT
12	QD6-S31	Female Hansen Quick Disconnect x Female NPT
13	QD6-T31	Male Hansen Quick Disconnect x Female NPT

## Complete Spray Nozzle Assemblies

Spray nozzles can be used with Fireproofing, Stucco, Plaster, EIFS and Drywall Texture.

**1" Spray Nozzle** Includes nozzle, air stem, 1/2" orifice, 1" pipe, swivel and air hose.

Part No	Description
A126110	Finish Nozzle Complete, 1", 1 x 12
T12610-18	Finish Nozzle Complete, 1", 1 x 18
T12610-24	Finish Nozzle Complete, 1", 1 x 24
T12610-48	Finish Nozzle Complete, 1", 1 x 48
T12610-72	Finish Nozzle Complete, 1", 1 x 72
T12610-19	Flex Finish Nozzle Complete, 1", 1 x 18" Flexible Hose
T12614-12	Finish Nozzle w/ QD (Hansen)
T12616-12	Finish Nozzle w/ LP (Camlock)



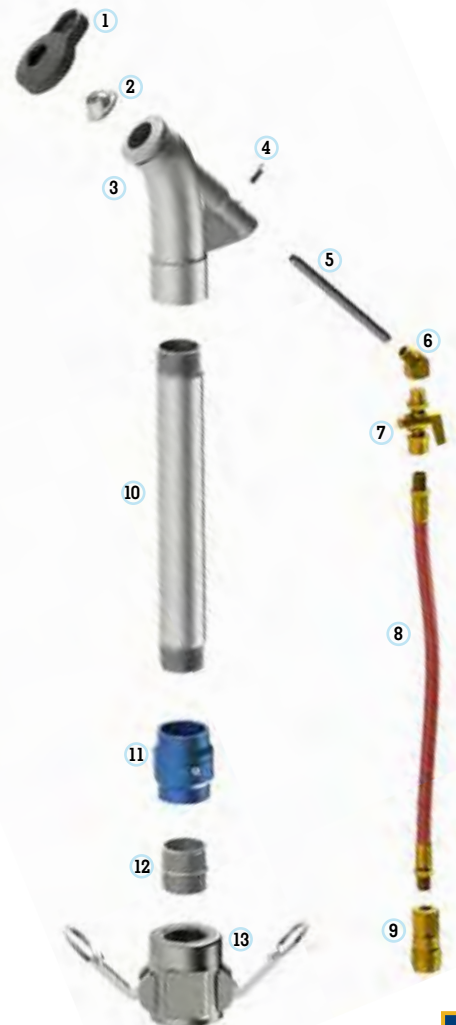
### 1 1/4" Browning Nozzle

Includes nozzle, air stem, 5/8" orifice, 1.25" pipe, swivel and air hose.

Part No	Description
A126111	Browning Nozzle Complete, 1.25", x 9
T12611-24	Browning Nozzle Complete, 1.25", x 24
T12611-00	Western Browning Nozzle

### Replacement Parts - 1" and 1 1/4" Spray Nozzle

Ref No	Part No	Description
1	AT309094	Rubber Cap
2	AT910055 AT910057	1/2" Standard on 1" 5/8" Standard on 1.25"
3	AT910001 AT910067	Nozzle body, 1" Finish Nozzle Nozzle body, 1 1/4" Browning Nozzle
4	AT301845	Thumb Screw, 1/4-20 UNC X .50
5	AT910045 AT910045L	Air Stem, short, 5 1/8" Air Stem, long
6	AT910047	Elbow, 45°, brass
7	AT306021 BV252LPMF	Ball Valve, 1/4", Male x Female (stock Putzmeister) Ball Valve, 1/4", Male x Female (CJ Spray option)
8	AT912454 H10402-00 H10402-10 H10402-20 H10402-30 H10402-40	1/4" x 12" Air Hose, 1/4" Male x Male NPT 1/4" x 18" Air Hose, 1/4" Male x Male NPT 1/4" x 24" Air Hose, 1/4" Male x Male NPT 1/4" x 36" Air Hose, 1/4" Male x Male NPT 1/4" x 48" Air Hose, 1/4" Male x Male NPT 1/4" x 72" Air Hose, 1/4" Male x Male NPT
9	DCB20	Female Air Quick Disconnect x Female NPT
10	AT304074 C12610-16 C12610-18 C12610-24 C12610-48 C12610-72 AT304079 C12611-24	1" x 12" Aluminum Pipe, Male x Male NPT 1" x 16" Flex Hose, Male x Male NPT 1" x 18" Aluminum Pipe, Male x Male NPT 1" x 24" Aluminum Pipe, Male x Male NPT 1" x 48" Aluminum Pipe, Male x Male NPT 1" x 72" Aluminum Pipe, Male x Male NPT 1 1/4" x 9" Aluminum Pipe, Male x Male NPT 1 1/4" x 24" Aluminum Pipe, Male x Male NPT
11	AT912970 AT912972	1" x 1" Steel Swivel 1 1/4" x 1 1/4" Steel Swivel
12	V10409-20	1 1/2" Male HP Cam Lock w/ 1 1/4" Close Nipple
13	CLD15125	1 1/2" Female HP Cam Lock x 1 1/2" Female NPT



# NOZZLE ACCESSORIES

## Pipe Extension Kits

Pipe extension kit includes pipe and Female x Female coupler. Air hose kit also extends air hose connection.



Part No	Description
S12609-24	3/4" x 24" Extension Kit
S12609-25	3/4" x 24" Extension Kit, w/ Air Hose
S12609-48	3/4" x 48" Extension Kit
S12609-49	3/4" x 48" Extension Kit, w/ Air Hose
S12609-72	3/4" x 72" Extension Kit
S12609-73	3/4" x 72" Extension Kit, w/ Air Hose
S12610-24	1" x 24" Extension Kit
S12610-25	1" x 24" Extension Kit, w/ Air Hose
S12610-48	1" x 48" Extension Kit
S12610-49	1" x 48" Extension Kit, w/ Air Hose
S12610-72	1" x 72" Extension Kit
S12610-73	1" x 72" Extension Kit, w/ Air Hose

## Swivels for Nozzles and Pole Guns

Female x Female with grease swivel

Part No	Description	Manufacturer
AT912970	1" x 1" Steel swivel	Putzmeister
AT912972	1 1/4" x 1 1/4" Steel swivel	Putzmeister
AT912973	1 1/2" x 1 1/4" Steel swivel	Putzmeister
AT912966	1" x 1" Aluminum swivel	Putzmeister
AT912967	1 1/4" x 1 1/4" Aluminum swivel	Putzmeister
AT912968	1 1/4" x 1" Aluminum swivel	Putzmeister



## 45° Pole Gun Nozzle Adaptor

Provides greater flexibility to spray columns and beams while fireproofing.  
Quickly change between 0 -90° angle.

Part No	Description
C12611-13	1" x 3/4" - For use with 1" finishing nozzles with 3/4" pipe
C12611-16	1" x 1" - For use with 1" finishing nozzles with 1" pipe





## Stamped Orifices, Mini Shields and Super Shields

Stamped orifices standard in complete nozzle assemblies.

Mini shields require a stamped orifice and provide a narrower pattern with more control.

Super Shields provide the narrowest pattern for precision fireproofing work.

Part No	Size	Description	Manufacturer
AT910052	1/4"	Stamped Orifice	Putzmeister
AT910053	5/16"	Stamped Orifice	Putzmeister
AT910054	3/8"	Stamped Orifice	Putzmeister
AT910060	7/16"	Stamped Orifice	Putzmeister
AT910055	1/2 S"	Stamped Orifice	Putzmeister
AT910056	9/16"	Stamped Orifice	Putzmeister
AT910057	5/8"	Stamped Orifice	Putzmeister
AT910058	11/16"	Stamped Orifice	Putzmeister
AT910059	3/4"	Stamped Orifice	Putzmeister
AT912963	3/4"	Mini Shield Short	Putzmeister
AT912964	1"	Mini Shield Medium	Putzmeister
AT912965	1 1/4"	Mini Shield Long	Putzmeister
C910055-50	1/2"	Super Shield 1/2"	CJ Spray
C910055-56	9/16"	Super Shield 9/16"	CJ Spray
C910055-63	5/8"	Super Shield 5/8"	CJ Spray



## Common nozzle replacement parts

See detailed parts schematics on previous pages for other parts.

Part No	Description	Manufacturer
AT309094	Rubber cap	Putzmeister
AT910045	Air stem, short	Putzmeister
AT910045L	Air stem, long	CJ Spray
AT301845	Thumb screw, 1/4"	Putzmeister
AT910047	45° elbow threaded	Putzmeister
AT306021	Air ball valve, 1/4" MxF	Putzmeister
BV252LPMF	Air ball valve, 1/4" MxF	CJ Spray
12-1330	Female air QD x Female NPT	CJ Spray
12-1332	Male air QD x Female NPT	CJ Spray



# GRACO NOZZLES & GUNS

## Graco Nozzles and Pole Guns

Pole guns are standard with complete Graco packages



Part No	Description
24Y619	Pole Gun with round texture pattern (includes round 1/2", 9/16", 5/8", 11/16", 3/4" and medium mini shield)
238080	Flex Hose Gun (includes round 3/16", 1/4", 5/16", 3/8", 7/16", 1/2" and flat pattern adaptor)
24T946	Pole Gun M680 Mortar Pump ONLY (includes round 5/16", 3/8" and 7/16")
24T947	Flex Hose Gun M680 Mortar Pump ONLY (includes round 5/16", 3/8" and 7/16")

## Retaining Cap and Round Nozzles for Graco Flex and Pole Guns

Not for use with HTX 680 Applicator

Part No	Description
16A405	Retaining cap, medium density rubber, standard
16A421	Retaining cap, hard density rubber
16A443	Round Nozzle #3, 3/16"
16A444	Round Nozzle #4, 1/4"
16A445	Round Nozzle #5, 5/16", standard
16A446	Round Nozzle #6, 3/8", standard
16A447	Round Nozzle #7, 7/16", standard
16A448	Round Nozzle #8, 1/2"
16A449	Round Nozzle #9, 9/16"
16A246	Fine Finish Housing (does not include flat finish discs)
235579	Flat finish disc, 1/8"
235580	Flat finish disc, 1/4"
248311	Flat finish disc, 5/16"
235581	Flat finish disc, 3/8"



## HTX 680 Applicator

Use with lighter density and more fluid materials such as EIFS and low-density mortars.

Part No	Description
25A515	HTX 680 Applicator (includes 4 round nozzles [4, 6, 8, 10 mm] and flat texture pattern tip kit)
24B327	HTX 680 Applicator (includes 4 round nozzles [4, 6, 8, 10 mm] and RAC X 671 airless tip kit)
24U209	HTX 680 Applicator, M680 Mortar Pump ONLY (with 4 round nozzles and 4 flat pattern discs)
287227	Flat texture pattern tip kit (includes adaptor with 3, 6, 8, 9.5 mm discs)
24U337	Airless tip extension kit (includes RAC X 671 tip)
248888	3mm round nozzle
248524	4mm round nozzle
248525	6mm round nozzle
248526	8mm round nozzle
248527	10mm round nozzle



# ON/OFF REMOTE CORDS & EXTENSIONS FOR PUMPS

## Remote On/Off Switches and Extension Cords

CJ Spray makes remote switches for all types of pumps. For custom solutions call 1-888-257-7729.

### Kodiak

Plug ends: Flat two-way universal connectors

Part No	Description
S10500-00	On/Off Pendant, Bare, No Plug
S10500-05	On/Off Pendant
S10520-00	Remote Cord Extension 50'

### Boss

Plug ends: Two-pole midget twist lock, ML-2

Part No	Description
S10500-10	On/Off Pendant
S10530-10	Remote Cord Extension 100'
S10530-25	Remote Cord Extension 250'



### Graco F340E and F680E

Plug ends: Two-pole midget twist lock, ML-1

Part No	Description
S10500-15	On/Off Pendant
S10540-10	Remote Cord Extension 100'
S10540-25	Remote Cord Extension 250'

### QuikSpray Carrousel

Plug ends: Two-pole midget twist lock, ML-1

Part No	Description
S10500-15	On/Off Pendant
S10540-04	Remote Cord Extension 40'

### Putzmeister Tommy Gun

Plug ends: Two-pole twist lock, L1-15

Part No	Description
S10500-20	On/Off Pendant
S10550-10	Remote Cord Extension 100'
S10550-25	Remote Cord Extension 250'



### Putzmeister S5 and Big Blue

Plug ends: Four-pole twist lock

Part No	Description
AT135723	On/Off Pendant w/ Speed Control
AT200597	Remote Cord Extension 125'

# MATERIAL HOSE ACCESSORIES

## Sponge Balls

Use for cleaning and priming hose with lubricant such as Slick Willie 2.

Part No	Description
113399	30mm for 3/4" and 1" Hose
248515	30mm for 3/4" and 1" Hose (pack of 5)
128745	40mm for 1.25" Hose
25A227	40mm for 1.25" Hose (pack of 5)
25A228	45mm for 1.5" Hose (pack of 5)
17L868	60mm for 2" Hose
17G930	60mm for 2" Hose (pack of 5)
000246000	80mm for 3" Hose



## Slick Willie 2

Slick Willie is designed to coat or lubricate the pump system ahead of the stucco and other cement based materials, allowing the concrete to stay hydrated and flow more smoothly. Any water loss can result in a time consuming plug. Concrete pump primers are a cost-effective way to decrease wear on your equipment and help pump today's more difficult mixes. One 4 oz bag of powder mixed with water makes 5 gallons of primer.

Part No	Description
V30010-01	4 oz Bag, each
V30010-10	4 oz Bag, pack of 10
V30010-50	4 oz Bag, box of 50



## Easy Spred Pump Aid

Used to enhance the field performance of cement-based materials.

Part No	Description
V30015-01	7 lb Bag, each



## Bio Slide Release Agent

Keep equipment looking professional with bio-based release agent which prevents stucco and other cement based materials for adhering to your pump and mixers. Apply with spray bottle or pump-up sprayer.

Part No	Description
V30015-16	16 oz Bottle, each
V30015-24	16 oz Bottles, case of 24
V30015-05	5 Gallon pail
V30020-00	Spray bottle package (3 sprayheads for 16 oz bottles)



## Silicone Spray Release Agent

Silicone spray keeps equipment looking professional in a more user-friendly aerosol spray can. Works great for spray nozzles, guns and fittings.

Part No	Description
V10105-01	10.5 oz Can, each
V10105-12	10.5 oz Can, case of 12







## Hose Halters and Safety Cables

Increase worker safety and meet OSHA regulation 1926.603 (a) (10) by preventing the hose from thrashing around in case the coupling becomes disconnected.

### Enclosed Hose Halter, Velcro

40" Nylon hose halter with heavy-duty nylon enclosure provides greater worker safety while protecting couplers from accidental separation.

Part No	Description
T10131-00	Use with 3/4" to 2" diameter hose connections



### Hose Halter

Use with hoses larger than 2" diameter or if enclosure is not necessary.

Part No	Description
U94560	Use with 1/4" to 2" diameter hose connections, 30" L
U94561	Use with 3/4" to 2" diameter hose connections, 40" L
U94564	Use with 2" to 3" diameter hose connections, 40" L



### Safety Cables

Traditional steel cables, 200 psi working pressure

Part No	Description
WB1	1/8" Cable, 1/4" - 1 1/4" hose, 20" long
WA2	1/4" Cable, 1 1/2" - 3" hose, 38" long
WSR1	1/2" to 1 1/4" Hose to Tool Service



### Male/Female Full Flow Ball Valves

Part No	Description
BV752LPMF	3/4" Male x Female 600 psi
BV102MF	1" Male x Female 600 psi



### Female/Female Full Flow Ball Valves

Part No	Description
BV752LP	3/4" Female x Female 600 psi
BV102LP	1" Female x Female 600 psi
BV152LP	1.5" Female x Female 600 psi
BV202LP	2" Female x Female 600 psi
BV302LP	3" Female x Female 600 psi



# CJ SPRAY STUCCO/ FIREPROOFING/GROUT HOSE



## Premium grade plaster grout hose with internally expanded fittings

Hose designed specifically for stucco, plaster, EIFS, fireproofing, grout and concrete materials. Internally expanded fittings ensure a smooth transition between hose wall and fitting, which prevents buildup. Higher pressure rating of 1,200 psi works safely with most pumps in the industry. Premium grade hose remains flexible while outer shell has great abrasion resistance.

### H1080 X - X X

#### Type of Hose

H1080= Plaster Grout Hose for Stucco, EIFS, Fireproofing and Plaster

#### Hose Diameter

0 = 1"  
1 = 1 1/4"  
2 = 1 1/2"  
3 = 2"  
4 = 3"

#### Hose Length

1 = 12.5'  
2 = 25'  
5 = 50'

#### Hose End Type

0 = Male NPT  
1 = High Pressure Camlock, male x female  
2 = Brass Low Pressure Camlock, male x female  
3 = Hansen style full port quick disconnect (3/4" and 1" hose only)



## Stocked Hose Assemblies Assembled with internally expanded fittings.

DIMENSIONS	MALE NPT	BRASS LP CAM	H. P. CAM (MxF)	HANSEN (MxF)	H. D. VICTAULIC
3/4" x 15'	H10799-10			H10799-13	
3/4" x 25'	H10799-20			H10799-23	
3/4" x 50'	H10799-50			H10799-53	
1" x 12'	H10800-10	H10800-12	H10800-11	H10800-13	
1" x 15'	H10800-15	H10800-152			
1" x 17'	H10800-17				
1" x 25'	H10800-20	H10800-22	H10800-21	H10800-23	
1" x 50'	H10800-50		H10800-51	H10800-53	
1.25" x 50'	H10801-50	H10801-52	H10801-51		
1.5" x 50'	H10802-50		H10802-51		
2" x 50'	H10803-50		H10803-51		
3" x 25'	H10804-20				A579320

## CJ Spray Recommended Hose Couplers

Using the right couplers with the appropriate pressure rating provides better worker safety and meets OSHA requirements.

For 3/4" and 1" hose use Hansen style quick disconnects.



For 1 1/4" to 2" hose use high pressure anodized camlocks.



For 3" hose use heavy-duty Victaulic hose couplers.



## CJ Spray Recommended Hose System Reducer Couplings

Complete kits to couple different diameter hoses together.

Part No	Description
S10800-10	3/4" to 1" hose (3/4" Male Hansen x 1" Female Hansen)
S10800-12	1" to 1.25" / 1.5" hose (1" Male Hansen x 1.5" Female HP Camlock)
S10800-13	1.25" Female Camlock (low pressure) - 1" Male Camlock (low pressure)
S10800-14	1.25" HP Camlock - 1" High Pressure Male
S10800-15	1.25" / 1.5" hose to 2" hose (1.5" Male HP Camlock x 2" Female HP Camlock)
S10800-17	1.25" HP Camlock - 1" Low Pressure Male Camlock
S10800-30	2" hose to 3" hose (2" Male HP Camlock x 3" HD Victaulic fitting)



## Hansen Style Full Port Quick Disconnects

Simple and reliable brass quick disconnects are ideal for 3/4" and 1" material hoses.

Part No	Description
QD4-T26	1/2" Male (plug) coupler x Female NPT, 2,200 psi
QD6-T31	3/4" Male (plug) coupler x Female NPT, 1,700 psi
QD8-T36	1" Male (plug) coupler x Female NPT, 1,300 psi
QD4-S26	1/2" Female coupler x Female NPT, 2,200 psi
QD6-S31	3/4" Female coupler x Female NPT, 1,700 psi
QD8-S36	1" Female coupler x Female NPT, 1,300 psi



# MATERIAL HOSE FITTINGS & COUPLERS



## High Pressure Camlock Fittings

Enhance worker safety with higher pressure rating camlocks than standard brass or aluminum. HP camlocks are made from extruded aluminum alloy and hard coat anodized for strength and durability. Rated for 750 psi working pressure.

### HP Camlock Repair Parts Male coupler x Female NPT thread

Part No	Description
CG15F-1	1 1/2" Gasket
CG20F-1	2" Gasket
CAM-ARM	Replacement Arm
CAM-RING	Replacement Ring
CAM-PIN	Replacement Pin
CAM-SET	Repair Kit

### Part A Coupler Male coupler x Female NPT thread

Part No	Coupler Size	Thread Size
15T116	1" Male	1" Female Graco Style
CLA125125	1 1/4" Male	1 1/4" Female
CLA15125	1 1/2" Male	1 1/4" Female
CLA1515	1 1/2" Male	1 1/2" Female
CLA2020	2" Male	2" Female



### Part D Coupler Female coupler x Female NPT thread

Part No	Coupler Size	Thread Size
289874	1" Female	1" Female Graco Style
CLD125125	1 1/4" Female	1 1/4" Female
CLD15125	1 1/2" Female	1 1/4" Female
CLD1515	1 1/2" Female	1 1/2" Female
CLD2020	2" Female	2" Female



### Part F Coupler Male coupler x Male NPT thread

Part No	Coupler Size	Thread Size
CLF15125	1 1/2" Male	1 1/4" Male
CLF1515	1 1/2" Male	1 1/2" Male
CLF2020	2" Male	2" Male



### Part B Coupler Female coupler x Male NPT thread

Part No	Coupler Size	Thread Size
CLB1515	1 1/2" Female	1 1/2" Male
CLB2020	2" Female	2" Male





# LOW PRESSURE CAMLOCKS

## Low Pressure Aluminum, Brass, and Poly Camlock Fittings

Standard aluminum couplers have same pressure rating as brass couplers; 250 psi. As a safety precaution, ensure pumping equipment will not over-pressurize couplers.

### Part A Coupler

Male coupler x Female NPT thread

Aluminum	Brass	Poly	Coupler Size	Thread Size
V10860-12	V10870-12	075ABP	3/4" Male	3/4" Female
V10860-16	V10870-16	100A	1" Male	1" Female
V10860-18	V10870-18	125A	1 1/4" Male	1 1/4" Female
V10860-24	V10870-24	150A	1 1/2" Male	1 1/2" Female
V10860-32	V10870-32	200A	2" Male	2" Female



### Part D Coupler

Female coupler x Female NPT thread

Aluminum	Brass	Poly	Coupler Size	Thread Size
V10861-12	V10871-12	075D	3/4" Female	3/4" Female
V10861-16	V10871-16	100D	1" Female	1" Female
V10861-18	V10871-18	125D	1 1/4" Female	1 1/4" Female
V10861-24	V10871-24	150D	1 1/2" Female	1 1/2" Female
V10861-32	V10871-32	200D	2" Female	2" Female



### Part F Coupler

Male coupler x Male NPT thread

Aluminum	Brass	Poly	Coupler Size	Thread Size
V10862-12	V10872-12	075F	3/4" Male	3/4" Male
V10862-16	V10872-16	100F	1" Male	1" Male
V10862-18	V10872-18	125F	1 1/4" Male	1 1/4" Male
V10862-24	V10872-24	150F	1 1/2" Male	1 1/2" Male
V10862-32	V10872-32	200F	2" Male	2" Male



### Part B Coupler

Female coupler x Male NPT thread

Aluminum	Brass	Poly	Coupler Size	Thread Size
V10863-12	V10873-12	075B	3/4" Female	3/4" Male
V10863-16	V10873-16	100B	1" Female	1" Male
V10863-18	V10873-18	125B	1 1/4" Female	1 1/4" Male
V10863-24	V10873-24	150B	1 1/2" Female	1 1/2" Male
V10863-32	V10873-32	200B	2" Female	2" Male



### Gaskets

Part No	Coupler Size
75-G	3/4"
100-G	1"
125-G	1 1/4"
150-G	1 1/2"
200-G	2"

# VICTAULIC HOSE COUPLERS

## Standard Victaulic Hose Ends

Pressure rated to 300 psi. As a safety precaution, ensure pumping equipment will not over-pressurize couplers.

Part No	Description
V10880-18	1 1/4" Female NPT
V10880-24	1 1/2" Female NPT
V10880-32	2" Female NPT
V10881-18	1 1/4" Male NPT
V10881-24	1 1/2" Male NPT
V10881-32	2" Male NPT



## Standard Victaulic Clamp

Use with Standard Victaulic hose ends

Part No	Description
V10882-18	1 1/4"
V10882-24	1 1/2"
V10882-32	2"



## Heavy Duty Victaulic Hose Ends

Pressure rated to 300 psi. As a safety precaution, ensure pumping equipment will not over-pressurize couplers.

Part No	Description
V10883-48	3" Female NPT
V10884-48	3" Male NPT

## Heavy Duty Victaulic Clamp

Use with Heavy Duty Victaulic hose ends

Part No	Description
V10885-48	3"



## Victaulic Gasket

Used with standard and heavy duty Victaulic clamps. Sold individually

Part No	Description
V10886-18	1 1/4"
V10886-24	1 1/2"
V10886-32	2"
V10886-48	3", Heavy Duty style
V10887-48	3", Heavy Duty style



## Swage Reducer Couplings (Male x Male NPT)

Build your own reducers when using low pressure Camlock and Victaulic fittings.

Part No	Description
HRN7510	3/4" to 1", close reduce nipple
U94554	3/4" to 1", swage
U94555	1" to 1.25", swage
U94556	1.25" to 1.5", swage
U94557	1.5" to 2", swage
U94550	2" to 3", swage



# EXTENSION & POWER CORDS

## 110V Extension Cords

Premium extension cord with lighted 3-prong plugs

Part No	Gauge	Length	Max Amps
V10424-25	12	25'	15
V10424-50	12	50'	15
V10424-1X	12	100'	15
V10425-25	10	25'	15
V10425-50	10	50'	15
V10425-1X	10	100'	15



## 208/230 Volt Power Cords

SEOOW Black Cord with Twistlock ends

Part No	Gauge	Phase	Amps	Length	Ends
T10200-50	8/3	1PH	30	50'	L6-30P/L6-30R
T10200-1X	8/3	1PH	30	100'	L6-30P/L6-30R
T10210-50	6/3	1PH	50	50'	CS8264C/CS8265C
T10210-1X	6/3	1PH	50	100'	CS8264C/CS8265C
T10220-50	6/4	3PH	50	50'	CS8364C/CS8365C
T10220-1X	6/4	3PH	50	100'	CS8364C/CS8365C
T10240-1X		1PH	30	100'	MP20, P20, P30
T10250-1X		3PH	30	100'	MP40, P40



## 208/230 Volt Pigtails

3' long pigtails with one female connector

Part No	Gauge	Phase	Amps	Ends
T10200-03	8/3	1PH	30	L6-30R
T10200-10	8/3	1PH	30	L6-30P
T10210-03	6/3	1PH	50	CS8264C
T10220-03	6/4	3PH	50	CS8364C



## 208/230 Bulk Power Cord

SEOOW Black Cord, sold by foot

Part No	Gauge
89803-35-01	8/3
89603-35-01	6/3
89604-35-01	6/4



## Twist Lock Cord Ends

Single and Three Phase ends

Part No	Phase	Style	Amps	End Type
C2623	1PH	Female Connector	30	L6-30R
2621LEV	1PH	Male Plug	30	L6-30P
V10353-00	1PH	Female Connector	50	CS8264C
V10353-01	1PH	Male Plug	50	CS8265C
CS6364C	3PH	Female Connector	50	CS6364C
V10354-00	3PH	Male Plug	50	CS6365C



# AIR HOSE & WHIP CHECKS

## Continental Frontier Air Hose\*

EDPM synthetic rubber with spiral synthetic yarn reinforcement. Temperature range -40° - 190° F



### 1/4" Air Hose

200 psi Rated

Part No	Length	Hose End Type
V10402-00	per ft	Bulk
H10402-00	18"	1/4" Male NPT
H10402-10	2'	1/4" Male NPT
H10402-20	3'	1/4" Male NPT
H10402-30	4'	1/4" Male NPT
H10402-40	6'	1/4" Male NPT
H10402-50	10'	1/4" Male NPT
H10402-60	25'	1/4" Male NPT
H10402-70	50'	1/4" Male NPT
H10402-80	100'	1/4" Male NPT

### 5/16" Air Hose

200 psi Rated

Part No	Length	Hose End Type
V10403-00	per ft	Bulk
H10403-00	18"	1/4" Male NPT
H10403-10	2'	1/4" Male NPT
H10403-20	3'	1/4" Male NPT
H10403-30	4'	1/4" Male NPT
H10403-40	6'	1/4" Male NPT
H10403-50	10'	1/4" Male NPT
H10403-60	25'	1/4" Male NPT
H10403-70	50'	1/4" Male NPT
H10403-80	100'	1/4" Male NPT

### 3/8" Air Hose

200 psi Rated

Part No	Length	Hose End Type
V10404-01	per ft	Bulk
H10404-01	18"	1/4" Male NPT
H10404-11	2'	1/4" Male NPT
H10404-21	3'	1/4" Male NPT
H10404-31	4'	1/4" Male NPT
H10404-41	6'	1/4" Male NPT
H10404-51	10'	1/4" Male NPT
H10404-61	25'	1/4" Male NPT
H10404-60	25'	3/8" Male NPT
H10404-71	50'	1/4" Male NPT
H10404-76	52'	1/4" Male NPT
H10404-70	50'	3/8" Male NPT
H10404-81	100'	1/4" Male NPT
H10404-86	102'	1/4" Male NPT
H10404-80	100'	3/8" Male NPT

### 1/2" Air Hose

200 psi Rated

Part No	Length	Hose End Type
V10405-60	per ft	Bulk
H10405-60	25'	1/2" Male NPT
H10405-70	50'	1/2" Male NPT
H10405-80	100'	1/2" Male NPT

### 3/4" Air Hose

200 psi Rated

Part No	Length	Hose End Type
V10406-60	per ft	Bulk
H10406-60	25'	3/4" Male NPT
H10406-70	50'	3/4" Male NPT
H10406-80	100'	3/4" Male NPT

### 1" Air Hose

200 psi Rated

Part No	Length	Hose End Type
V10407-60	per ft	Bulk
H10407-60	25'	1" Male NPT
H10407-70	50'	1" Male NPT
H10407-80	100'	1" Male NPT

\*Please note: Custom cut bulk hose is non-returnable

## Steel Safety Cables, Hose to Tool Service

Use only with air hose and other low line pressure applications up to 200 psi

Part No	Description
WSR1	1/8" cable, 1/2" - 1.25" hose diameter, 20.25" L



## Steel Safety Cables, Hose to Hose Service

Use only with air hose and other low line pressure applications up to 200 psi

Part No	Description
U94579	1/8" cable, 1/2" - 1.25" hose diameter, 20.25" L
WA2	1/4" cable, 1/2" - 3" hose diameter, 38" L





# AIR HOSE FITTINGS

## Air King Universal Coupling (Chicago Style)

Iron, 150 psi working pressure, supplied with safety clip

Part No	Size	Threads
AM7	3/4"	Male NPT
AM12	1"	Male NPT
AM8	3/4"	Female NPT
AM13	1"	Female NPT
AM6	3/4"	Hose Barb
AM11	1"	Hose Barb
AWR4	Washer, rubber	
AC1	Safety Pin	



## Male Plug Quick Disconnect X Female NPT

Industrial Interchange Fitting Style

Part No	Body Size	Female NPT
DCP20	1/4"	1/4"
DCP2023	1/4"	3/8"
DCP26	3/8"	3/8"
DCP2624	3/8"	1/2"



## Male Plug Quick Disconnect x Male NPT

Industrial Interchange Fitting Style

Part No	Body Size	Male NPT
DCP2101	1/4"	1/8"
DCP21	1/4"	1/4"
DCP2103	1/4"	3/8"
DCP25	3/8"	3/8"
DCP2504	3/8"	1/2"



## Female Quick Disconnect X Female NPT

Industrial Interchange Fitting Style. Automatic push-to-connect

Part No	Body Size	Female NPT
DCB20	1/4"	1/4"
DCB2023	1/4"	3/8"
DCB26	3/8"	3/8"
DCB2624	3/8"	1/2"



## Female Quick Disconnect X Male NPT

Industrial Interchange Fitting Style. Automatic push-to-connect

Part No	Body Size	Male NPT
DCB21	1/4"	1/4"
DCB2103	1/4"	3/8"
DCB25	3/8"	3/8"
DCB2504	3/8"	1/2"



# AIR HOSE FITTINGS

## Push-Lock Barbed Fittings

All CJ Spray air hose is compatible with push-lock fittings

### Male NPT

Part No	Hose ID	Male NPT
4312-04-04	1/4"	1/4"
4132-05-04	5/16"	1/4"
4312-06-06	3/8"	3/8"



### Female NPT

Part No	Hose ID	Female NPT
4315-04-04	1/4"	1/4"
4315-05-04	5/16"	1/4"
4315-06-06	3/8"	3/8"
5835102-06-06	3/8"	3/8" Swivel



### Hose Splicer

Part No	Hose Barb	Hose Barb
4300-04-04	1/4"	1/4"
4300-05-05	5/16"	5/16"
4300-06-06	3/8"	3/8"
4300-08-08	1/2"	1/2"
4300-12-12	3/4"	3/4"



## Low Pressure Reusable Hose Connections

Plated brass, 30° seat

Part No	Hose ID	Female NPS Swivel
12-304	1/4"	1/4"
12-306	1/4"	3/8"
12-303	3/8"	1/4"
12-302	3/8"	3/8"



### Replacement Compression Rings

Part No	Description
12-310	1/4" ID hose replacement compression ring
12-312	3/8" ID hose replacement compression ring



## Premium Contractor Grade Sureline Water Hose

Male x Female brass garden hose threads. 150 psi working pressure.

Part No	Hose Diameter	Length
H10712-25	3/8"	25'
H10715-50	3/4"	50"
H10715-1X	3/4"	100'



## Garden Hose Repair Fittings

Hose barb end to repair hoses. For best results secure with Oetiker clamp

Part No	Barb Size	Thread End
V10575-06	3/8"	Male GHT
V10576-06	3/8"	Female GHT
V10577-06	3/8"	Hose Mender
V10575-10	5/8"	Male GHT
V10576-10	5/8"	Female GHT
V10577-10	5/8"	Hose Mender
V10575-12	3/4"	Male GHT
V10576-12	3/4"	Female GHT
V10577-12	3/4"	Hose Mender
700018GP	3/4"	Hose Washer
700004GP	3/4"	Hose Washer w/ Screen
V10200-00	1/2" - 1 1/4" OD	Oetiker Clamp Kit w/ Pincers



## Garden Hose Quick Disconnects

Save time and wear/tear on hose with QDs

Part No	Coupler	Thread End
M70402	Female	Female GHT
M70399	Male	Female GHT



## Garden Hose Ball Valves and Y's

Part No	Description
M71861	Metal ball valve, male x female GHT
115648	Plastic ball valve, male x female GHT
M70611	Metal Y, female inlet, two male outlets, all GHT
V10578-12	Metal Y with two metal ball valves



## Wash Down Nozzles

Part No	Description
V10580-00	Insulated Pistol Grip Water Nozzle
M70703	Brass Sweeper Nozzle



# CLAMPS

## Worm Drive Clamps

Chrome zinc plated steel clamp with stainless steel screw

Part No	Hose Diameter
WDC#4	1/4" - 5/8"
WDC#10	1/2" - 1-1/6"
WDC#12	1/2" - 1.25"
WDC#16	11/16" - 1.5"
WDC#20	3/4" - 1.75"
WDC#28	1 5/16" - 2.25"
WDC#36	1.75" - 2.75"
WDC#40	2" - 3"
WDC#44	1.75" - 3.75"
WDC#72	3" - 5"



## Oetiker Stepless Ear Clamps

Hose barb end to repair hoses. For best results secure with Oetiker clamp

Part No	Thread End
V10200-00	Oetiker Clamp Kit w/ Pincers
16700010	1/2" (13.3 mm)
16700013	9/15" (14.5 mm)
16700016	5/8" (15.7 mm)
16700020	23/32" (18.5 mm)
16700026	7/8" (22.6 mm)
16700031	1" (25.6 mm)
16700035	1.125" (28.6 mm)
16700040	1.25" (31.6 mm)
14100082	Replacement Jaw Pincer (Standard)
14100083	Side Jaw Pincer (Not included in kit)



## Band Clamps

Galvanized Steel

Part No	Clamp ID	Band Width
V10903-K311	1 3/8"	3/8"
V10905-K4	1"	5/8"
V10905-K7	1 3/4"	5/8"
V10905-K10	2 1/2"	5/8"
V10940-F40	Economy Hand Tool	3/8" and 5/8"
V10940-F100	Premium Hand Tool	3/8" and 5/8"



## Double Bolt Clamps

Heavy-duty clamp with maximum tightening ability

Part No	Hose Diameter
700148	1" and 1.25"
700150	1 1/2" and 2"





# DRYWALL TEXTURE SPRAYERS



## Graco Texture Sprayers

Graco's RTX line of drywall sprayers utilizes a parastaltic pump design that delivers high-flow, long-life and is extremely easy to replace/maintain. The flow-through design freely passes large particles.

### Graco RTX 5000 Pro Interior Series

The new RTX 5000PI replaces the proven RTX 1500 as the ultimate interior texture sprayer perfect for Simulated Acoustic (popcorn), Orange Peel, Splatter, and Knockdown Finishes. The compact sprayer comes with an onboard air compressor and runs on a single 110 V, 15/20 Amp circuit.



Part No	Description
17H575	Graco RTX 5000PI w/ 1" x 25' Bonded Material & Air Hose and Trigger Gun w/ 6 Nozzles

### Graco RTX 5000 Pro Exterior Series

The new Pro Exterior Series has taken the RTX family of sprayers to the next level of performance by adding more power and exclusive features such as the WideTex Adapter. The 240 volt model increase the air performance from 8.6 cfm (110 V model) to 9.1 cfm.

Part No	Description
17H579	Graco RTX 5000PX w/ 1.25" x 25' Bonded Material & Air Hose and Trigger Gun w/ WideTex Adapter and 6 Nozzles, 110 V
17H581	Graco RTX 5500PX w/ 1.25" x 25' Bonded Material & Air Hose and Trigger Gun w/ WideTex Adapter and 6 Nozzles, 240 V



# ALUM INJECTION PUMP FOR FIREPROOFING

Injecting alum into cementitious fireproofing materials increases yields and/or enhances set characteristics. CJ Spray's cart-mounted injection system are designed from the ground up to be easy to operate and maintain.

## Typical Applications:

- Fireproofing

### Electric Mixer

Custom mixing blade designed specifically to quickly dissolve aluminum sulfate (hydrated) granules

### Single Surface Mount Power Input

Single power input reduces clutter of multiple power cords and provides single connection point that is high and dry off the floor

### Rugged Four-Wheel Cart

Custom engineered cart is compact and designed for easy operation and maintenance.

- Securely mounted tank will not tip during transportation
- Intuitive control panel is easier to use and prevents operator error
- Premium swivel casters with brakes and rigid casters (molded rubber)
- Heavy-duty steel construction with durable powder coat finish

### Cone Bottom Tank

Provides fallout area for aluminum sulfate sediment and allows for quick and easy draining/cleaning. 55-gallon capacity with easy-to-read gallon calibrations

### Neptune Metering Pump

High performance and proven industry standard pump



## Ordering Information



### Single Pump/Single Tank Cart

Supplies single injection nozzle with 55-gallon tank. Must stop spraying to refill and mix.

Part Number: T12651-00



### Single Pump/Twin Tank Cart

Supplies single injection nozzle with two 55-gallon tanks. Allows for continuous spraying from one tank while refilling and mixing in other

Part Number: T12652-00



### Dual Pump/Twin Tank Cart

Double production by supplying two sprayers while still allowing for continuous application. Can also be used in single sprayer operation.

Part Number: T12653-00

# SMALL JOB ALUM INJECTION PUMP

Small, lightweight and portable design is excellent for small job and patching applications. Perfect size for mixing one bag batch of aluminum sulfate.

## Rugged Three-Wheel Cart

Custom engineered cart is compact and designed for easy operation and maintenance.

- Securely mounted tank will not tip during transportation
- Intuitive control panel is easier to use and prevents simultaneous mixing and spraying
- Heavy-duty steel construction with durable powder coat finish

## Electric Mixer

Custom mixing blade designed specifically to quickly dissolve aluminum sulfate (hydrated) granules

## 20-gallon Tank

Perfect size for mixing one bag batch of aluminum sulfate

## Surface Mount Power Input

Keeps electrical connection high and dry

## Compact Metering Pump

Adjustable high performance pump



## Ordering Information

**Part No: T12650-00 Small Job Alum Injection Pump, Bare**  
Supplies single injection nozzle with 20-gallon tank.  
Must stop spraying to refill and mix.

## Alum Starter Kits

Part No	Description
S10010-00	Single Pump Startup Kit: Includes 250' alum hose (Qty 2 3/8" x 100' and Qty 1 3/8" x 50') 1 Injection Nozzle Assembly, Yield Kit
S10011-00	Dual Pump Startup Kit: Includes 500' alum hose (Qty 4 3/8" x 100' and Qty 2 3/8" x 50') 2 Injection Nozzle Assembly, Yield Kit
S10012-00	Small Job Pump Startup Kit: Includes 100' alum hose (Qty 2 3/8" x 50') 1 Injection Nozzle Assembly, Yield Kit



## Alum Yield Kit

Part No	Description
S10450-05	Yield Test Kit (includes all items below)
V10490-00	Carry Case
V10491-00	Scale, 0-2000 grams
V10492-00	Hydrometer 1200/1420 Scale
V10493-00	Spatula
V10494-00	32 oz Cup
V10495-00	36 oz Cup
V10489-00	Thickness Gauge



# ALUM INJECTION ACCESSORIES

## Alum Hose

Lightweight, economical high pressure hose provides good balance of flexibility and durability

Part No	Description
V10397-50	3/8" x 50' Male x Female Swivel
V10397-1X	3/8" x 100' Male x Female Swivel
V10397-52	3/8" x 52' Male x Female Ends
V10397-1X2	3/8" x 102' Male x Female Ends
V10398-52	3/8" x 52' MNPT Ends



## Quick Disconnects for Alum Hose Connections

Pressure Washer Style QDs to quickly assemble hose sections (brass)

Part No	Description
GPD10003	3/8" Female Quick Disconnect x Female NPT*
GPD10004	3/8" Female Quick Disconnect x Male NPT
GPD10008	3/8" Male (plug) Quick Disconnect x Female NPT
GPD10009	3/8" Male (plug) Quick Disconnect x Male NPT*
GPD10074	Stainless Coupler Female
GPD10075	Stainless Coupler Male
GPD10078	Stainless Plug Female
GPD10079	Stainless Plug Male



*\*Standard setup in CJ Spray alum hose system*

## Alum Inline Injector Assemblies

Inline alum injection assembly should be installed between last section of hose and 15' whip hose.

Part No	Description
T12620-09	Alum Injector with Couplings, use w/ 3/4" Whip Hose
T12620-10	Alum Injector with Couplings, use w/ 1" Whip Hose



## Alum Inline Injector Assemblies Adjustable Flow with Couplings

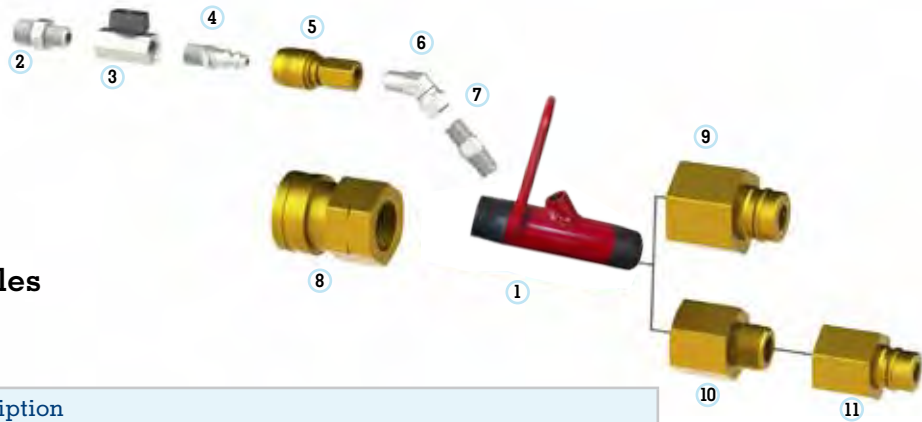
Adjustable flow control gives installer metering capability closer to work area.

Inline alum injection assembly should be installed between last section of hose and 15' whip hose.

Part No	Description
T12620-11	Alum Injector with Couplings, use w/ 3/4" Whip Hose
T12620-12	Alum Injector with Couplings, use w/ 1" Whip Hose

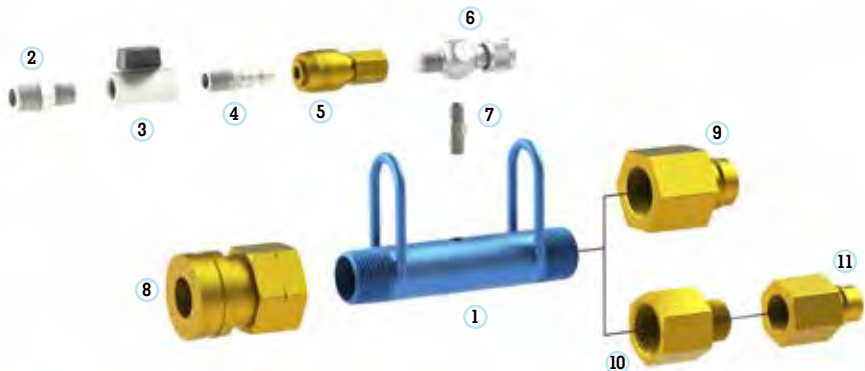


**Replacement Parts for:  
Alum Inline Injector Assemblies  
(T12620-09, T12620-10)**



Ref No	Part No	Description
1 - 7	T12620-05	Alum Injector Without Couplings
1	S10619-08	Injector Nipple Assembly
2	HRN2538	Hex Nipple
3	BV252LP	Ball Valve, 1/4" Brass
4	12-1333	1/4" Airline fitting w/ QD Male x Male NPT
5	12-1330	1/4" Airline fitting w/ QD Female x Female NPT
6	MPE4502525	Pipe Swivel Elbow 45
7	V10271-04	Check Valve, piston Spring, 1/4" MNPT
8	QD8-S36	1" Female Hansen x Female NPT
9	QD8-T36	1" Male Hansen x Female NPT (Use w/ 1" Whip Hose)
10	HRF7510	Reducer Fitting, 1" F NPT x 3/4" M NPT (Use w/ 3/4" Whip Hose)
11	QD6-T31	3/4" Male Hansen x Female NPT (Use w/ 3/4" Whip Hose)

**Replacement Parts for:  
Alum Inline Injector Assemblies  
Adjustable Flow with Couplings  
(T12620-11, T12620-12)**



Ref No	Part No	Description
1-7	T12620-06	Alum Injector Adjustable Flow without Couplings
1	S12620-06	Injector Nipple Assembly
2	HRN2538	Hex Nipple
3	BV252LP	Ball Valve, 1/4" Brass
4	12-1333	1/4" Airline fitting w/ QD Male x Male NPT
5	12-1330	1/4" Airline fitting w/ QD Female x Female NPT
6	206264	Needle Valve
7	V10271-02	Check Valve, piston Spring, 1/8" MNPT
8	QD8-S36	1" Female Hansen x Female NPT
9	QD8-T36	1" Male Hansen x Male NPT (Use w/ 1" Whip Hose)
10	HRF7510	Reducer Fitting, 1" F NPT x 3/4" M NPT (Use w/ 3/4" Whip Hose)
11	QD6-T31	3/4" Male Hansen x Female NPT (Use w/ 3/4" Whip Hose)



# ALUM INJECTION PATCH NOZZLE - FIREPROOFING

## Alum Injection Patch Nozzles

1" Finish nozzle with built in alum injection port with flow control. For use with low flow pumps and patch jobs. Alum injects directly into finish nozzle. Do not use Inline Alum Injector when using alum injection patch nozzle.

### 1" Alum Injection Patch Nozzle w/ 3/4" Pipe

Part No	Description
T12612-12	Complete Alum Injection Patch Nozzle w/ 3/4" x 12" Pipe and Female Hansen
T12612-18	Complete Alum Injection Patch Nozzle w/ 3/4" x 18" Pipe and Female Hansen
T12612-24	Complete Alum Injection Patch Nozzle w/ 3/4" x 24" Pipe and Female Hansen
T12612-16	Complete Alum Injection Patch Nozzle w/ 3/4" x 16" Flex Hose and Female Hansen



### 1" Alum Injection Patch Nozzle w/ 1" Pipe

Part No	Description
T12613-12	Complete Alum Injection Patch Nozzle w/ 1" x 12" Pipe, 1" Female NPT inlet (swivel)
T12613-18	Complete Alum Injection Patch Nozzle w/ 1" x 18" Pipe, 1" Female NPT inlet (swivel)
T12613-24	Complete Alum Injection Patch Nozzle w/ 1" x 24" Pipe, 1" Female NPT inlet (swivel)

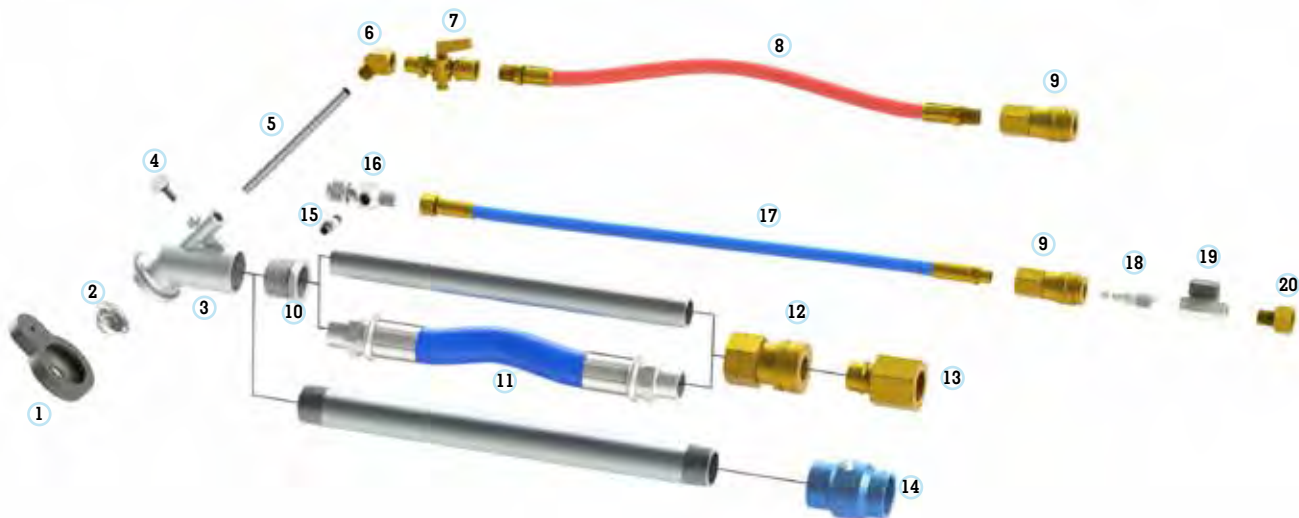


### Extension Kits for Alum Injection Patch Nozzle

Alum injection patch nozzle comes with 12" pipe. Extend reach with extension kits.

Part No	Description
S12609-26	3/4" x 24" Extension Kit, w/ Air and Alum Hoses
S12609-50	3/4" x 48" Extension Kit, w/ Air and Alum Hoses
S12609-74	3/4" x 72" Extension Kit, w/ Air and Alum Hoses





## Replacement Parts for Alum Injection Patch Nozzle

Ref No	Part No	Description	Qty
1	AT309094	Rubber Cap	1
2	AT910055	1/2" Orifice standard	1
3	S12612-01	Modified Nozzle body, 1" Finish Nozzle	1
4	AT301845	Thumb Screw, 1/4-20 UNC X .50	1
5	AT910045	Air Stem, short, 5 1/8"	1
6	AT910047	Elbow, 45°, brass	1
7	AT306021	Ball Valve, 1/4", Male x Female (stock Putzmeister)	1
8	AT912454 H10402-00 H10402-10	1/4" x 12" Air Hose, 1/4" Male x Male NPT 1/4" x 18" Air Hose, 1/4" Male x Male NPT 1/4" x 24" Air Hose, 1/4" Male x Male NPT	1 1 1
9	12-1330	Female Air Quick Disconnect x Female NPT	2
10	V000101-00*	Bushing, SST, 3/4" Female x 1" Male NPT	1
11	C12609-12* C12609-18* C12609-24* AT304074† C12610-18† C12610-24† C12609-16*	3/4" x 12" Aluminum Pipe, Male x Male NPT 3/4" x 18" Aluminum Pipe, Male x Male NPT 3/4" x 24" Aluminum Pipe, Male x Male NPT 1" x 12" Aluminum Pipe, Male x Male NPT 1" x 18" Aluminum Pipe, Male x Male NPT 1" x 24" Aluminum Pipe, Male x Male NPT 3/4" x 16" Flex Hose, Male x Male NPT	1 1 1 1 1 1 1
12	QD6-S31*	3/4" Female Hansen Quick Disconnect x Female NPT	1
13	QD6-T31*	3/4" Male Hansen Quick Disconnect x Female NPT	1
14	AT912970†	1" x 1" Steel Swivel	1
15	V10271-02	Check Valve, SST, 1/8", Male x Male	1
16	206264	Metering Valve	1
17	H12610-12 H12610-18 H12610-24	1/4" x 12" Alum Hose, Male x Female Swivel 1/4" x 18" Alum Hose, Male x Female Swivel 1/4" x 24" Alum Hose, Male x Female Swivel	1 1 1
18	12-1333	Male Air Quick Disconnect x Male NPT	1
19	BV252LP	Ball Valve, 1/4", Female x Female	1
20	V10260-38	Reducer Fitting, 1/4" Male x 3/8" Female	1

\*For use with 3/4" finish nozzle T12612-XX

†For use with 1" finish nozzle T12613-XX

# CAFCO® BLAZE-SHIELD®



## Nozzles and Hose for CAFCO® Blaze Shield Applications

### Supply Hose

Part No	Description
UV1-200	2" x 50' UREVAC UV1
UV1-250	2.5" x 50', UREVAC UV1
UV1-300	3" x 50', UREVAC UV1
UF2-250	2.5" x 50', UREFLEX UF2
UF2-300	3" x 50', UREFLEX UF2
C12620-25	2.5" Supply Hose Splice Kit
C12620-30	3" Supply Hose Splice Kit
041-252	2.5" to 2" Reducing Splicer
041-325	2.5" to 3" Reducing Splicer



### Hose Clamps

Part No	Description
WDC#40	2-3" Hose Clamp
WDC#72	3-5" Hose Clamp

### Hydra-Cone Ring Nozzles

Part No	Description
020-26	2" ID Ring Nozzle (6 tip) with blue .5 gpm tips (021-500)
020-259	2.5" ID Ring Nozzle (9 tip) with yellow .4 gpm tips (021-400)



### Hydra-Cone Ring Nozzle with Accessory Pack

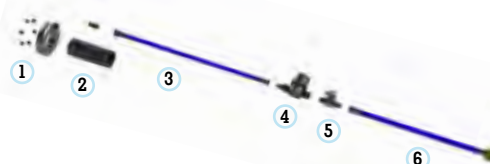
Includes nozzle and accessory pack (5" sleeve, 15" fluid hose, strainer, on/off water valve, and 12" hose adapter with garden hose female thread).

Part No	Description
020-266	2" ID Ring Nozzle with Accessory Pack
020-2596	2.5" ID Ring Nozzle with Accessory Pack



### Accessory Pack Parts List

Ref No	Part No	Description
1	021-500 021-400 021-300	Blue, .5 gpm Yellow, .4 gpm Orange, .3 gpm
2	022-21 022-251	5" Sleeve for use with 2" ID Ring Nozzle 5" Sleeve for use with 2" ID Ring Nozzle
3	012-4515	15" Hose Assembly
4	023-459	Strainer
5	012-457	Water On/Off Valve
6	012-4512	12" Hose Adaptor w/ female garden hose fitting
	V10489-00	Depth Gauge



## Expander Sleeve

Improve consistency and coverage by using Expander Sleeve which provides more uniform wetting of all fibers and binders. Easily install just before Hydra-Cone nozzle.

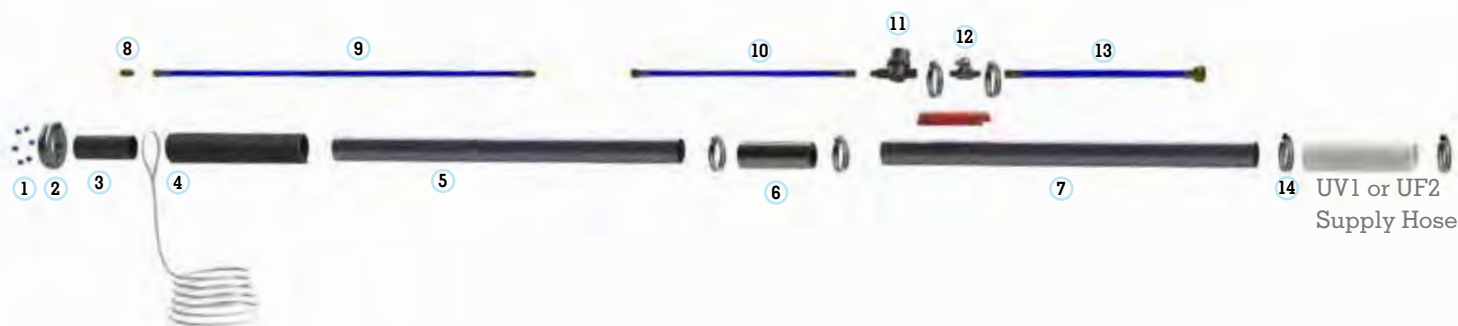
Part No	Description
022-22	Expander Sleeve for use with 2" ID Ring Nozzle
022-252	Expander Sleeve for use with 2.5" ID Ring Nozzle



## Hydra-Cone Modular Pole

Improve reach and increase production with 8' and 12' pole applicators. NOTE: Part number/price does not include nozzle.

Part No	Description
010-248	8' Pole for use with 2" ID Ring Nozzle
010-2548	8' Pole for use with 2.5" ID Ring Nozzle
010-24812	12' Pole for use with 2" ID Ring Nozzle
010-254812	12' Pole for use with 2.5" ID Ring Nozzle



## Modular Pole Parts List

Ref No	Part No	Description	Qty
1	021-500	Blue, .5 gpm	6 / 9
	021-400	Yellow, .4 gpm	6 / 9
	021-300	Orange, .3 gpm	6 / 9
2	020-26	2" ID Ring Nozzle (6 tip)	1
	020-259	2.5" ID Ring Nozzle (9 tip)	
3	022-21	5" Sleeve for use with 2" ID Ring Nozzle	1
	022-251	5" Sleeve for use with 2.5" ID Ring Nozzle	
	022-22	Expander Sleeve for use with 2" ID Ring Nozzle	
	022-252	Expander Sleeve for use with 2.5" ID Ring Nozzle	
4	014-215	Flex Hose w/ Cord for use with 2" ID Ring Nozzle	1
	014-2515	Flex Hose w/ Cord for use with 2.5" ID Ring Nozzle	
5	011-242	42" Pole w/ collar and clamps for use with 2" ID Ring Nozzle	1
	011-2542	42" Pole w/ collar and clamps for use with 2.5" ID Ring Nozzle	
6	014-457	Clamping Pad	1
7	013-29	Swivel for use with 2" ID Ring Nozzle (accepts 2.5" hose)	1
	013-259	Swivel for use with 2.5" ID Ring Nozzle (accepts 2.5" hose)	
8	024-451	Nipple	1
9	012-4542	42" Hose Assembly	2
10	012-4530	30" Hose Assembly	1
11	023-459	Strainer	1
12	012-457	Water On/Off Valve	1
13	012-4512	12" Hose Adaptor w/ female garden hose fitting	1
14	WDC#40	Worm Clamp	6

# PASSIVE FIRE PROTECTION



## Protecting steel, assets and lives is serious business

Built for passive fire protection (PFP) materials, Graco equipment handles the toughest epoxy intumescent fire protection coatings.

### Graco XM™

#### PFP Plural-Component Sprayer

- Handles two-part materials from 1:1 to 10:1
- Provides precise ratio control within + – 5%
- Ensures accurate, on-ratio mixing to reduce material waste
- Virtually eliminates the difficult task of removing material that is improperly proportioned
- Fast startup times due to performance of heating system

#### Applications

- Pipe racking
- Structural steel
- Storage tanks
- Onshore and offshore oil rigs
- Living quarters

### Plural Component Sprayer Complete XM PFP System

Part No	Description
262869	Includes base XM PFP w/ 50' dual heated hose, mix manifold, 17' static mix line, 30:1 flush pump, XHF Gun with 429 tip. Includes two Check-Mate® 20-gal heated feed modules with agitators and level sensors.

### Single Component Sprayer PFP Packages

Part No	Description
16P957	Xtreme PFP, <i>floor</i> mount, Includes 75 ft (23 m) spray line and XHF Gun with 429 tip.
16T311	Xtreme PFP, <i>cart</i> mount, Includes 75 ft (23 m) spray line and XHF Gun with 429 tip.



#### Level Sensors

- Automatically refills tanks when material reaches a certain level

#### Intuitive User Controls

- Displays ratio readings in real-time for ultimate spraying control
- USB drive for data reporting
- Displays current tank levels and spray temperatures

#### Heat Control

- Easy to use "set and forget" temperature controls
- Maintains a consistent temperature on five heat zones (A and B material, hose and pressure pots)

#### Heated Pressure Pots

- Circulates water for better heat transfer
- 20-gal (76 l)

#### Viscon® HF Heater

- Supports high production rates
- 5400 W - high efficiency core
- Cleanable design
- Set and forget fluid temperature

#### Hot Water Flush Kit (optional)

- Up to 180°F (82°C) max flush temperature
- Auto fill with water line connection
- 6-gal (23 l) tank capacity



## Plural Component Xtreme XM PFP Sprayer

## Single Component Xtreme PFP Sprayer



#### NXT Air Motor

- Standard de-icing feature keeps you up and running

#### Handles high-viscosity coatings

- 6500 psi (448 bar) working pressure
- Large inlet check with extended ball travel
- Pail ram plate with high down force and air assisted removal
- Large outlet check for improved pattern control

#### Compact cart-mount

- Heavy-duty cart withstands extreme conditions
- Easy handling for one person

# AIRLESS SPRAYERS



CJ Spray sells thousands of airless paint sprayers each year — from DIY homeowner sprayers to high pressure plural component proportioners. We can get you spraying quickly with over 50 models in stock and under budget with Graco's exclusive factory refurbished equipment inventory.

## Fireproofing Bonding Agent and Sealer Spray Packages

Airless spray packages designed specifically for fireproofing bonding agent and sealers. Choose between four-legged Stand or two-wheeled Hi Boy cart. Packages include Graco 395 PC, 100' (Qty: 2 x 50' Hoses) Spray Hose, Inline Valve Gun, CleanShot Shutoff Tip Swivel and 3' or 6' Pole.

Part No	Description
T17C31-03	Graco Ultra 395 PC Stand Package w/ 3' Pole Gun
T17C31-06	Graco Ultra 395 PC Stand Package w/ 6' Pole Gun
T17C31-13	Graco Ultra 395 PC Hi Boy Cart Package w/ 3' Pole Gun
T17C31-16	Graco Ultra 395 PC Hi Boy Cart Package w/ 6' Pole Gun



## Intumescent Coating and High Build Primer Spray Packages

Higher viscosity paints are difficult for most airless sprayers to siphon. The Graco Mark IV has a dropped inlet housing that allows it to easily siphon to the bottom of a 5 gallon pail. Packages include 3/8" x 100' Hose, 1/4" Whip, Inline Swivel and non-restrictive Flex Plus Spray Gun. Choose between Standard or Pro Contractor model which includes the added benefits of built-in Hose Reel, Digital Pressure Display and gallon Job Counter.

Part No	Description
16W897	Graco Mark IV Standard Package
16W898	Graco Mark IV Pro Contractor Package



## Drywall Mud Airless Spray Packages

Drywall mud cannot be siphoned with most airless paint sprayers. The Graco Mark V has a dropped inlet housing to siphon from the bottom of the 5-gallon pail and the power to atomize with 100' of hose. Packages include 3/8" x 100' Hose, 1/4" Whip, Inline Swivel and non-restrictive Heavy Duty Texture Gun. Choose between Standard or Pro Contractor model which includes the added benefits of built-in Hose Reel, Digital Pressure Display and gallon Job Counter.

Part No	Description
16W905	Graco Mark V Standard Package
16W906	Graco Mark V Pro Contractor Package
244223	Air Atomizer Kit (Does not include air hose)*



\*Add the air atomizing kit to spray textured patterns for applications such as Orange Peel and Knockdown.

Use in place of pump-up sprayer



## Typical Materials Sprayed:

- Cure & Seals
- Concrete Sealers
- Water Repellants
- Hardener Densifiers
- Form Release
- Mold Inhibitors

Greatly increase productivity when spraying thin viscosity liquids with similar consistencies to water. CJ Spray's lineup of low-pressure spray packages create very little overspray, are easy to use and require little to no maintenance. Significantly increase output and reduce worker fatigue when compared to pump-up sprayers. Reduce downtime and waste using larger container sizes.

## Electric Operated HVLP Airless

Electric sprayer is capable of spraying one gun. Comes mounted on three wheel cart with 20-gallon tank.

Part No	Description
T10620-00	12V 3-wheel Cart, 20 gal
T10621-00	110V 3-wheel Cart, 20 gal
T10622-00	110V 4-leg 5 gal



## Triton Air Operated Sealer Pumps

CJ Spray's air operated sealer pumps are capable of spraying two guns at one time. 4 cfm per gun.

Part No	Description
T10600-00	Triton 4-legged frame for 5-gallon Pails
T10601-00	Triton 55-gallon Drum Bung Mount
T10602-00	Triton Hang Mount for large Poly Totes
T10603-00	Triton 3-wheel Cart w/ 20-gallon Tank



## Air Compressors

Electric operated air compressor supplies enough air for two operators running on a single Triton Pump.

Gas operated air compressor supplies enough air for four operators running on two Triton Pumps.

Part No	Description
U90061	Ingersoll Rand 2 HP Twin Tank Electric Compressor, 4.3 cfm @ 90 psi
U90060	Ingersoll Rand 5 HP Wheelbarrel Twin Tank Gas Compressor, 11.8 cfm @ 90 psi



\*Add the air atomizing kit to spray textured patterns for applications such as Orange Peel and Knockdown.



# SPRAY FOAM



CJ Spray is the premier manufacturer of turn-key spray foam equipment in North America. We know how to build spray foam equipment, and we do it right. Spray foam applicators aren't just installers, they are manufacturers: Taking an **A** component and a **B** component to make **C** (finished insulation product). Having the right equipment partner to make sure you are set-up correctly, properly trained and is there for technical support is key to success and limiting liability. CJ Spray is here to be *your long term partner*.



## Spray Rigs Brochure

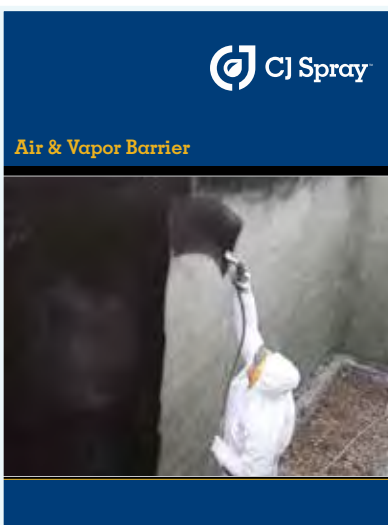
For more information  
on our Spray Foam  
Equipment and  
Turn-key Rigs please  
request a free  
brochure or go to  
[www.cjspray.com/foam](http://www.cjspray.com/foam)



# WATERPROOFING & AIR BARRIER



CJ Spray offers a complete line of equipment to spray waterproofing and air barrier products. We work with many coatings manufacturers to develop custom solutions for difficult to spray materials. So if you are looking for a simple 5-gallon portable sprayer or a self contained plural component heated system, we *have you covered*.



## Air & Vapor Barrier Brochure

For more information on our  
Waterproofing and Air Barrier Sprayers  
please request a free brochure or go to  
[www.cjspray.com/waterproofing](http://www.cjspray.com/waterproofing)





# PRESSURE WASHERS



## Direct Drive Pressure Washers

High performance pressure washers with a compact and portable design.

Part No	Description
WP-3200-0MHB	3200 psi @ 2.4 gpm, GX200 Honda OHV engine, Direct drive Mi-T-M crank driven pump
CA-3003-1MAH	3000 psi @ 3.0 gpm, GX270 Honda OHV engine, Direct drive AR crank driven pump



## Belt Drive Pressure Washers

Belt drive design allows for higher pressures and flow rates.

Part No	Description
CBA-4004-1MGH	4000 psi @ 4.0 gpm, GX390 Honda OHV engine



## Hot Water Pressure Washers

Improve cleaning capability with hot water.

Part No	Description
HSP-2503-0MMH	2500 psi @ 2.6 gpm, GX200 Honda OHV engine, Direct drive Mi-T-M crank driven pump



# PRESSURE WASHER FITTINGS

## Pressure Washer Style Quick Disconnects

Heavy duty, brass quick disconnects

Part No	Description
GPD10003	3/8" Female Quick Disconnect x Female NPT*
GPD10004	3/8" Female Quick Disconnect x Male NPT
GPD10008	3/8" Male (plug) Quick Disconnect x Female NPT
GPD10009	3/8" Male (plug) Quick Disconnect x Male NPT*



## O-Rings

Part No	Description
AW-0025-0122	10pk nozzle o-rings
AW-0025-0123	10pk QD o-rings



## Nozzle Sets

4 pack-contains 1 of each of the following spray angles; 0° (red), 15° (yellow), 25° (green), and 40° (white). 5000 Max P.S.I

Part No	Description	Flow Rate
105127	#3 QD style nozzle set	1.5 gpm
105120	#3.5 QD style nozzle set	1.75 gpm
105121	#4 QD style nozzle set	2.0 gpm
105122	#4.5 QD style nozzle set	2.25 gpm
105123	#5 QD style nozzle set	2.5 gpm



## Non Marking Pressure Washer Hose

Part No	Description
851-0338	3/8" x 50' w/ Quick Disconnects



## Accessories

Part No	Description
851-0095	Gun w/ lance
50-0195	Reel





**50% Mesh**

**70% Mesh**

**85% Mesh**

CJ Spray is a distributor for Eagle Industries and stocks a wide variety of debris netting, safety guard fencing, tarps and reinforced poly. The following is a small sample of the product line we offer — for a complete list of tarps and netting call one of our tech specialists at 1-888-257-7729.

## Debris Netting Rolls, 50% & 70% Mesh

Lightweight netting used as scaffolding enclosures to contain dust, debris or overspray. Easily installs by attaching cable ties to scaffold frames through pre-fabricated button holes that are knitted on hems of the material. Available in black, green, blue and white. Flame and non-flame retardant. 4', 8', 8' 6", 10' and 12' heights.

Part No	Description
DN50-86150-BLK	50% Mesh, 8' 6" x 150', Black
DN50-86150-BLK-FR	50% Mesh, 8' 6" x 150', Black, Flame Retardant
DN70-08150-BLK-FR	70% Mesh, 8' x 150', Black, Flame Retardant
DN50-10150-DST-FR	50% Mesh, Desert Tan, Flame Retardant



## Debris Netting Tarp, 70% Mesh

Lightweight netting used as scaffolding or building tarps to enclose dust, debris or overspray. Built with reinforced edges and grommets for easy installation. Fire-rated.

Part No	Description
MT-2050-DGR-FR	20' x 50' with Grommets, Green
MT-2050-BLK-FR	20' x 50' with Grommets, Black
MT-2050-DST-FR	20' x 50' with Grommets, Desert Tan



## HD Debris Tarp, 85% Mesh

Heavy-duty tarp used as scaffolding or building tarps to contain dust, debris or overspray. Built with reinforced edges and grommets for for easy installation.

Part No	Description
MS-2050-GRN	20' x 50' with Grommets, Green
MS-2050-BLK	20' x 50' with Grommets, Black
MS-2050-WHT-FR	20' x 50' with Grommets, White, Fire-rated





## String Reinforced Poly

Diamond Scrim is a string reinforced poly material made of a diamond-pattern polyester scrim laminated between two sheets of high-strength polyethylene film. The reinforced polyester scrim enhances the life of the product making it highly tear-resistant.

Part No	Description
DS6-20100	6 mil, 20' x 100' roll, non FR
DS6-20100-FR	6 mil, 20' x 100' roll, Fire Retardant
DS6-40100	6 mil, 40' x 100' roll, non FR



## Insulated Tarps

Ideal enclosure tarps for cold climate regions where heated job sites are required. Made of high-strength woven polyethylene with an insulated closed-cell foam core. Tarps are designed to hold up in low temperatures and withstand medium to high winds. Manufactured with rust-proof brass grommets for easy installation. Orange color.

Part No	Description
IT-1220-3	3/16" Insulated Foam Core, 12' x 20'
IT-1220-4	1/4" Insulated Foam Core, 12' x 20'



## Safety Guard Debris Netting

High density knitted polyethylene designed to protect pedestrians and workers. OSHA compliant. Available in orange, blue or black and heights of 2', 4', 5' 6", 8' 6" and 10'.

Part No	Description
SN-04150-ORG-FR	1/4" Open Mesh Netting, 4' x 150', Orange
SN-56150-ORG-FR	1/4" Open Mesh Netting, 5' 6" x 150', Orange



## Tie Down Accessories

Part No	Description
U94509	Cable Ties, 11", 100/case, 50 lb Rating, Black
U94510	Cable Ties, 14", 100/case, 50 lb Rating, Black
V10911-08	Carabiner, 8mm
A-WC11B	Wind Clips, 11", 10/case
H-CAB719516-100	5/16" Cable, 100'
H-CAB719516-1000	5/16" Cable, 1000'
H-CAB719516-5000	5/16" Cable, 5000'
H-CAB71938-1000	3/8" Cable, 1000'
H-CLA516	5/16" Cable Clamp
H-CLA38	5/16" Cable Clamp





## Spray Accessories Catalog

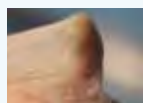
For the best prices and fast delivery of accessories and safety gear you use, check out our in-depth catalog.

[www.cjspray.com/spray-accessories](http://www.cjspray.com/spray-accessories)

## Over 50 SKUs of disposable protective clothing in stock

### Three Levels of Protection

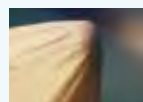
Thumb Press Test



**Lightweight** - Thin material is breathable and works well with dry particulate such as dust and spray foam.



**Middleweight** - Good compromise between durability and breathability while improving chemical protection.



**Heavyweight** - Maximum durability and chemical protection. Better breathability than comparable brands.

### Three Different Models

All in stock \*As low as \$1.09/suit\*



With Hood & Boots



With Hood, Elastic Ankles



With Elastic Wrist & Ankles

## Over 25 SKUs of disposable gloves in stock



### Nitrile Gloves

4 mil / 100/box \$10.69  
8 mil / 50/box \$10.69



### PosiGrip Work Glove

12/pk \$13.68



### Premium Work Glove

12/pk \$41.02

CJ Spray

2845 W Service Rd. • Eagan, MN 55121

1-888-CJSpray (1-888-257-7729)

[customerservice@cjspray.com](mailto:customerservice@cjspray.com) • [www.cjspray.com](http://www.cjspray.com)